

Disney Parks Blog

presents:

Disney Paper Parks

Happy Haunts

part 5

created by Stephanie Jazmines & Amy Young of



Walt Disney IMAGINEERING
© Disney

#DisneyMagicMoments

#DisneyPaperParks





Disney Paper Parks

#DisneyMagicMoments | #DisneyPaperParks

HAUNTED MANSION - DISNEYLAND

Sheet Numbers: A, B, C, D, E, F & 1 - 11

HISTORY

On August 9, 1969, the doors of the Haunted Mansion first creaked open to ghoulish ghosts (and guests) looking for an unlivable home at its original location in New Orleans Square at Disneyland® Park.

The idea for a haunted house at Disneyland was included in an early concept design sketch by Harper Goff dating back to 1952, when Disneyland was still being conceptualized. Within a week of the Haunted Mansion's opening, Disneyland celebrated what was then its highest single-day attendance. Today, the attraction is one of the most beloved and classic in Disneyland.

So, foolish mortals, we invite you to build your own version of the original Haunted Mansion, full of ghoulish delights and happy haunts. The ghosts of the Haunted Mansion are just “dying” for you to join them – as there is always room for one more!

MATERIALS



Glue

Scissors



Tape



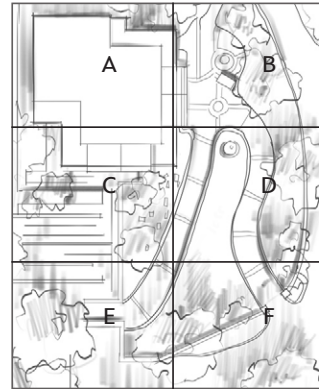
Crayons

GUIDE

Lines

- Valley fold, fold in front
- - - - - Mountain fold, fold behind
- Cut
- X-ray or guide line.

INSTRUCTIONS



1. Color all the sheets as you like.
2. Sheets A - F: Lay the plan sheets according to the image above. This will be the base for your model. You can tape them together or keep them separate for easy storage.
3. Sheets G - H: Cut and fold the trees. Glue the tops, and place them around the plan. Make as many as you'd like! Smaller versions are located on Sheets 8 - 9.
4. Sheets 1 - 4: Cut, fold, and glue according to the tabs. This will form the main volume of the mansion. This can get complicated, so make sure the mountain and valley folds are correct.
5. Sheets 5 - 6: Cut and fold East Porch and South Porch. Glue the corners together, then glue onto the South and East facades. Cut out the Walkway Floor on sheet 7, and carefully glue the tabs to the Facades and Porch Pieces. Set aside the Hitchiking Ghosts.
6. Sheets 8 - 9: Cut and fold Gable East and Gable South. Use tabs to glue onto porch and facades.
7. Sheet 10: Cut and fold Chimneys and Cupola. Attach cupola to the roof by gluing the tabs to the underside of the roof through the opening. Glue chimneys.
8. Sheet 11: Cut out and place Madame Leota's Séance Circle and the Portrait Chamber from Happy Haunts 3 and 4 to create interiors for your Haunted Mansion!

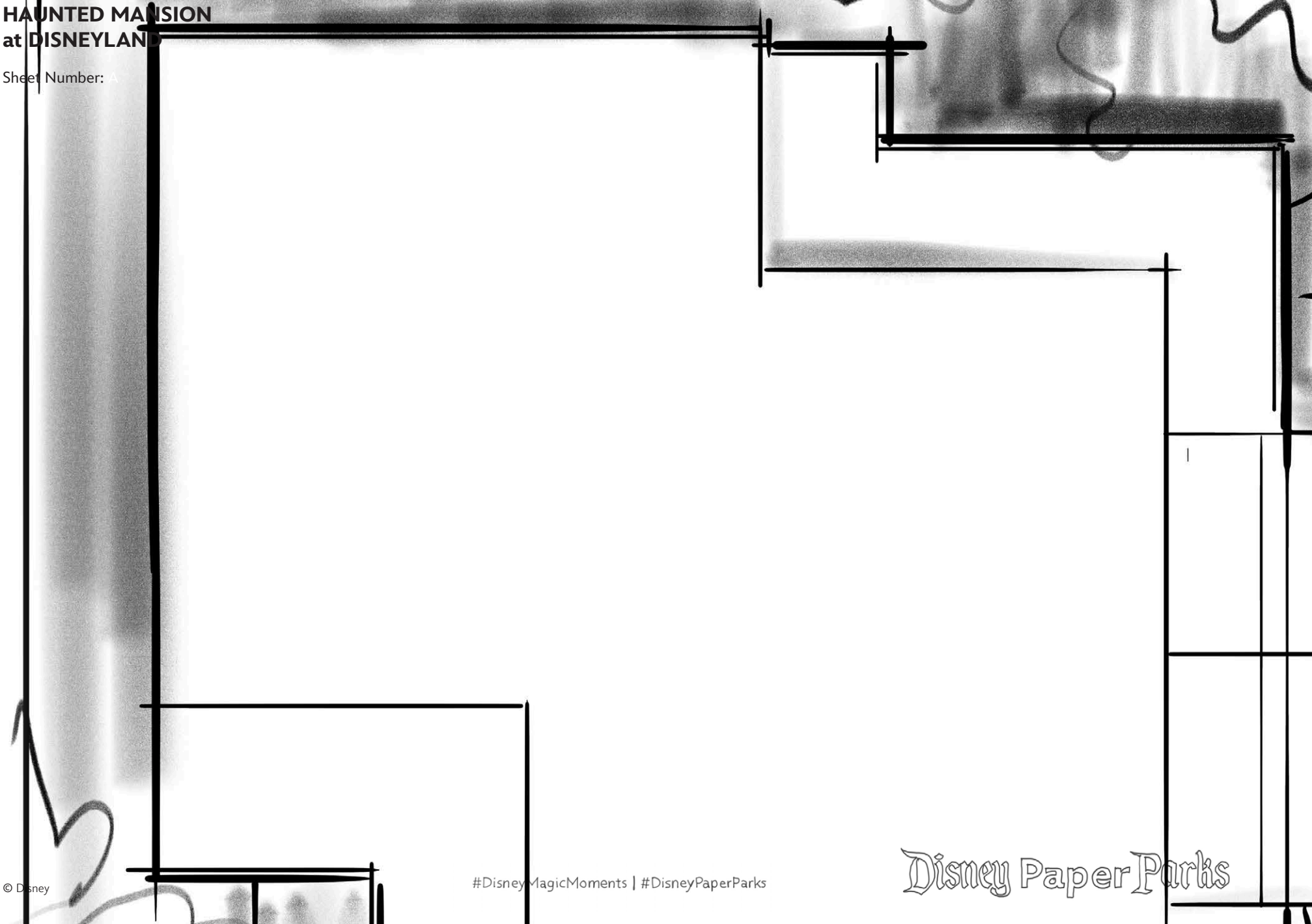
Please Note: When cutting with scissors and working with any of the materials listed above, adult participation and supervision is recommended.



© Disney

HAUNTED MANSION at DISNEYLAND

Sheet Number: A



© Disney

#DisneyMagicMoments | #DisneyPaperParks

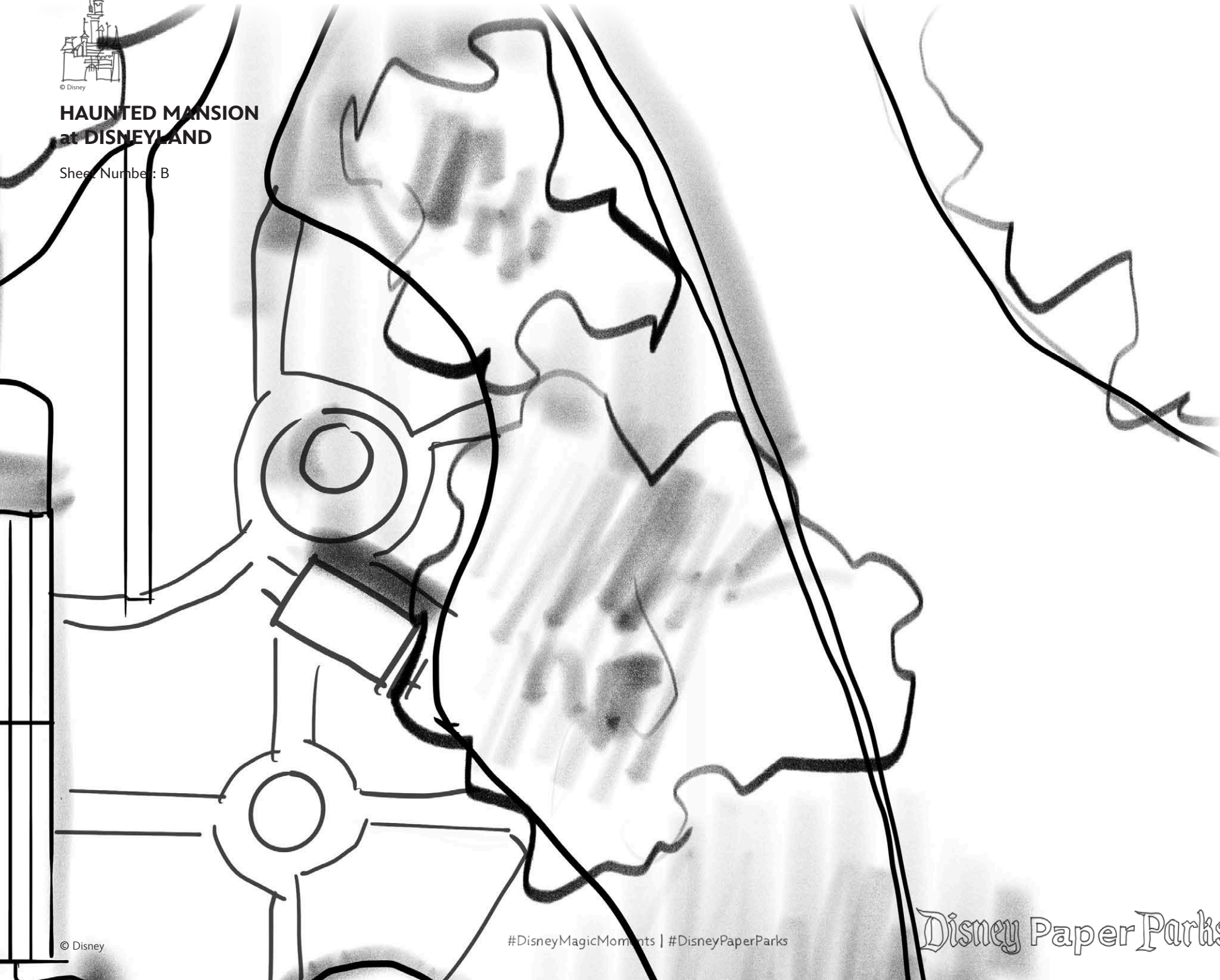
Disney Paper Parks



© Disney

HAUNTED MANSION at DISNEYLAND

Sheet Number: B



© Disney

#DisneyMagicMoments | #DisneyPaperParks

Disney Paper Parks



HAUNTED MANSION at DISNEYLAND

Sheet Number: C

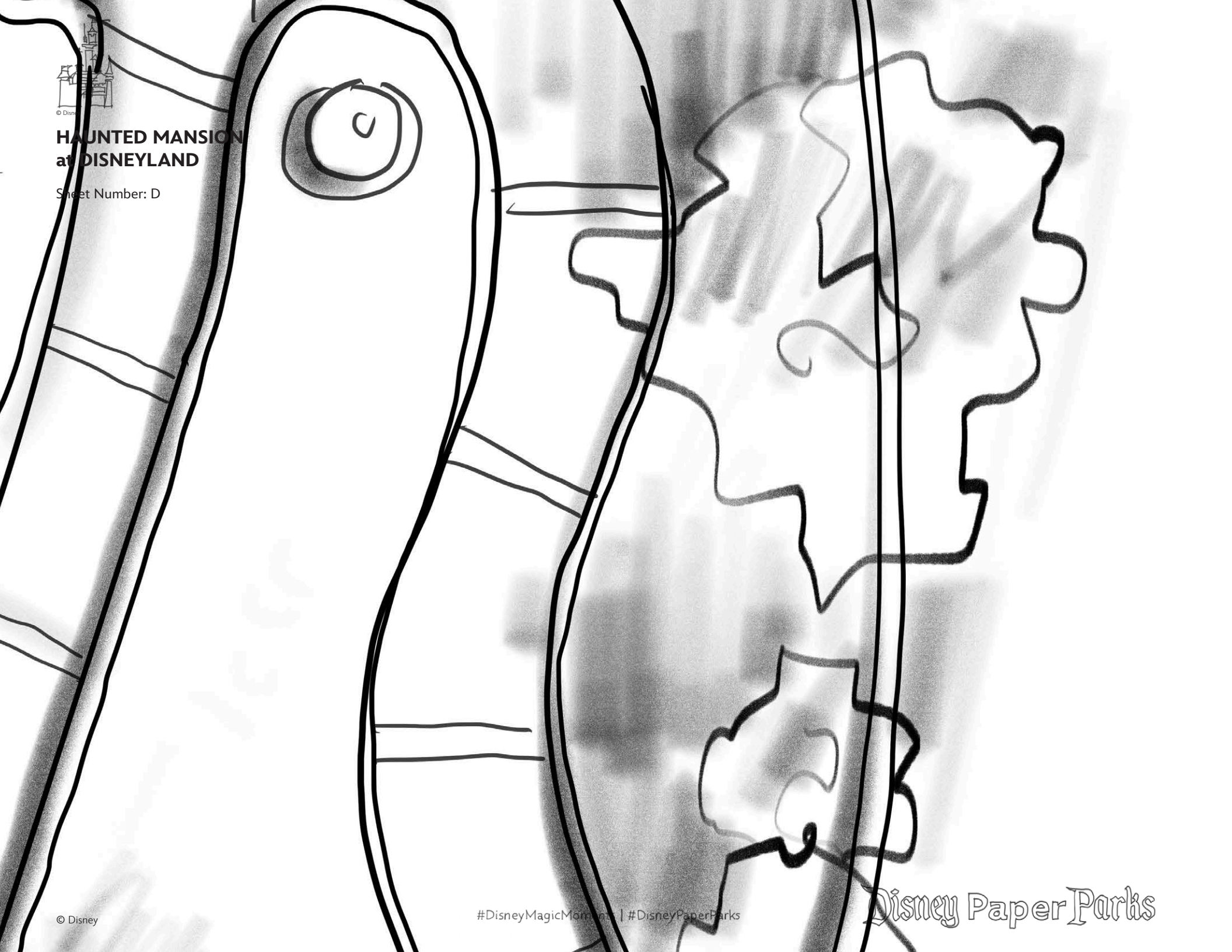




© Disney

HAUNTED MANSION at DISNEYLAND

Sheet Number: D





© Disney

HAUNTED MANSION at DISNEYLAND

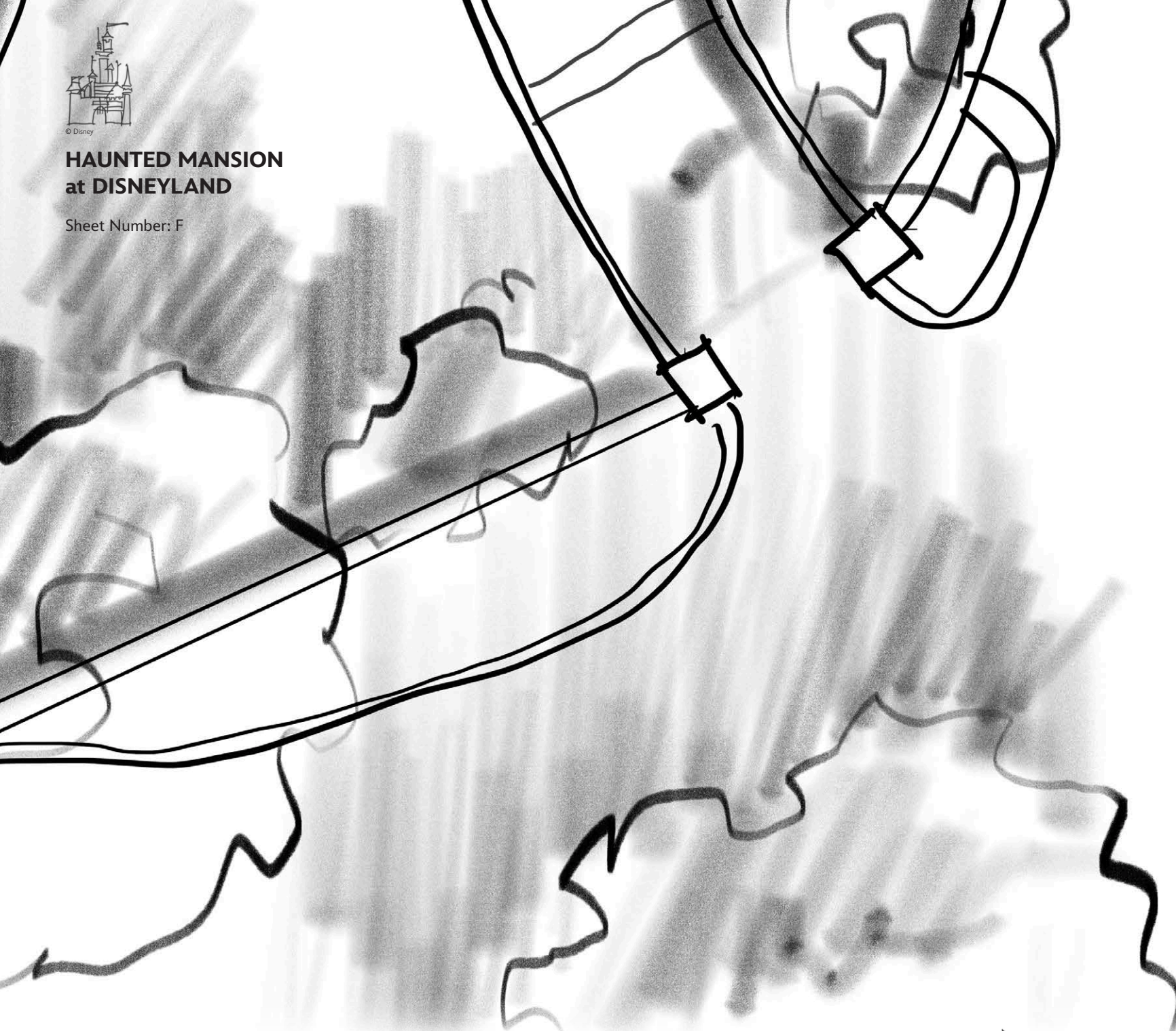
Sheet Number: E





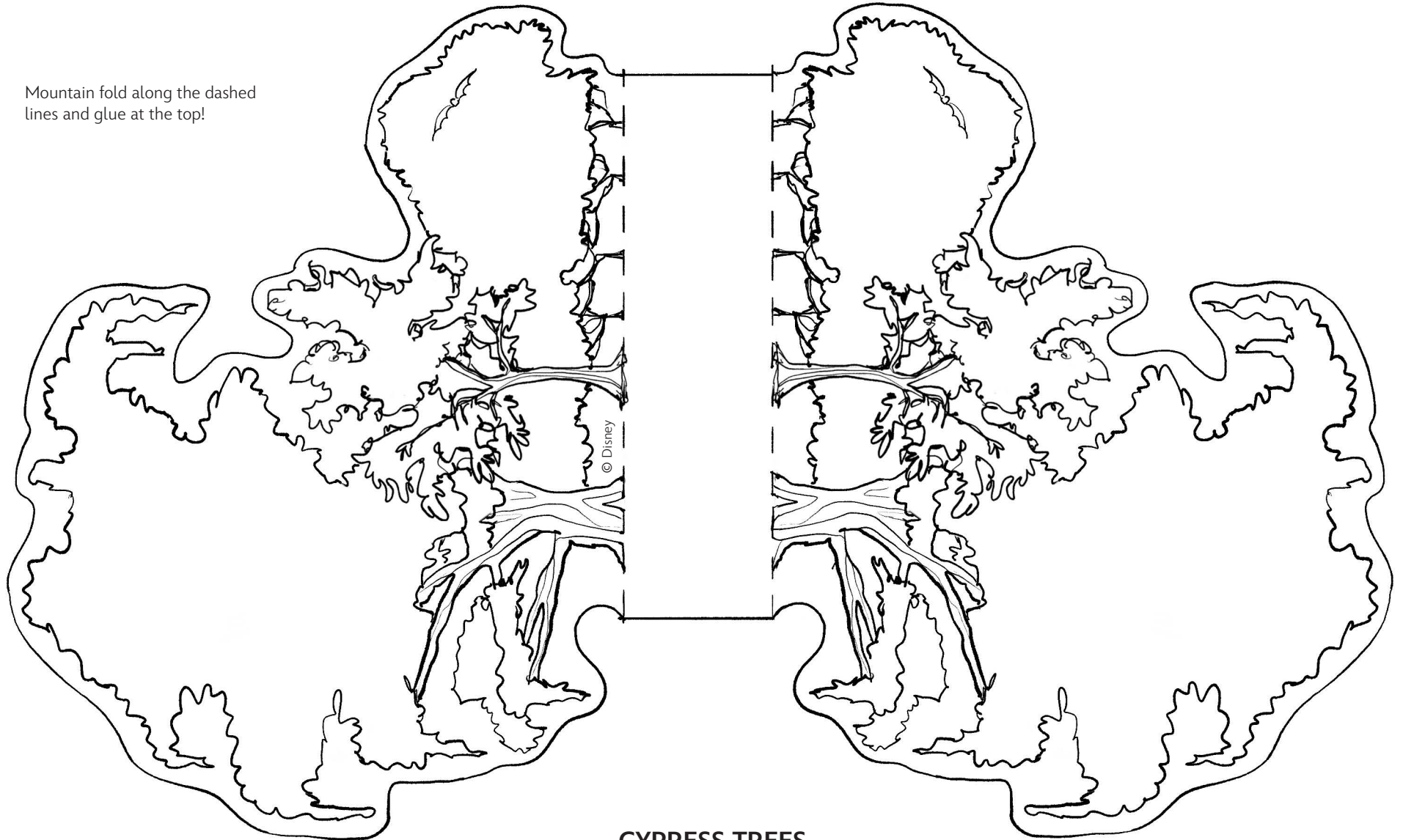
**HAUNTED MANSION
at DISNEYLAND**

Sheet Number: F





Mountain fold along the dashed lines and glue at the top!



CYPRESS TREES



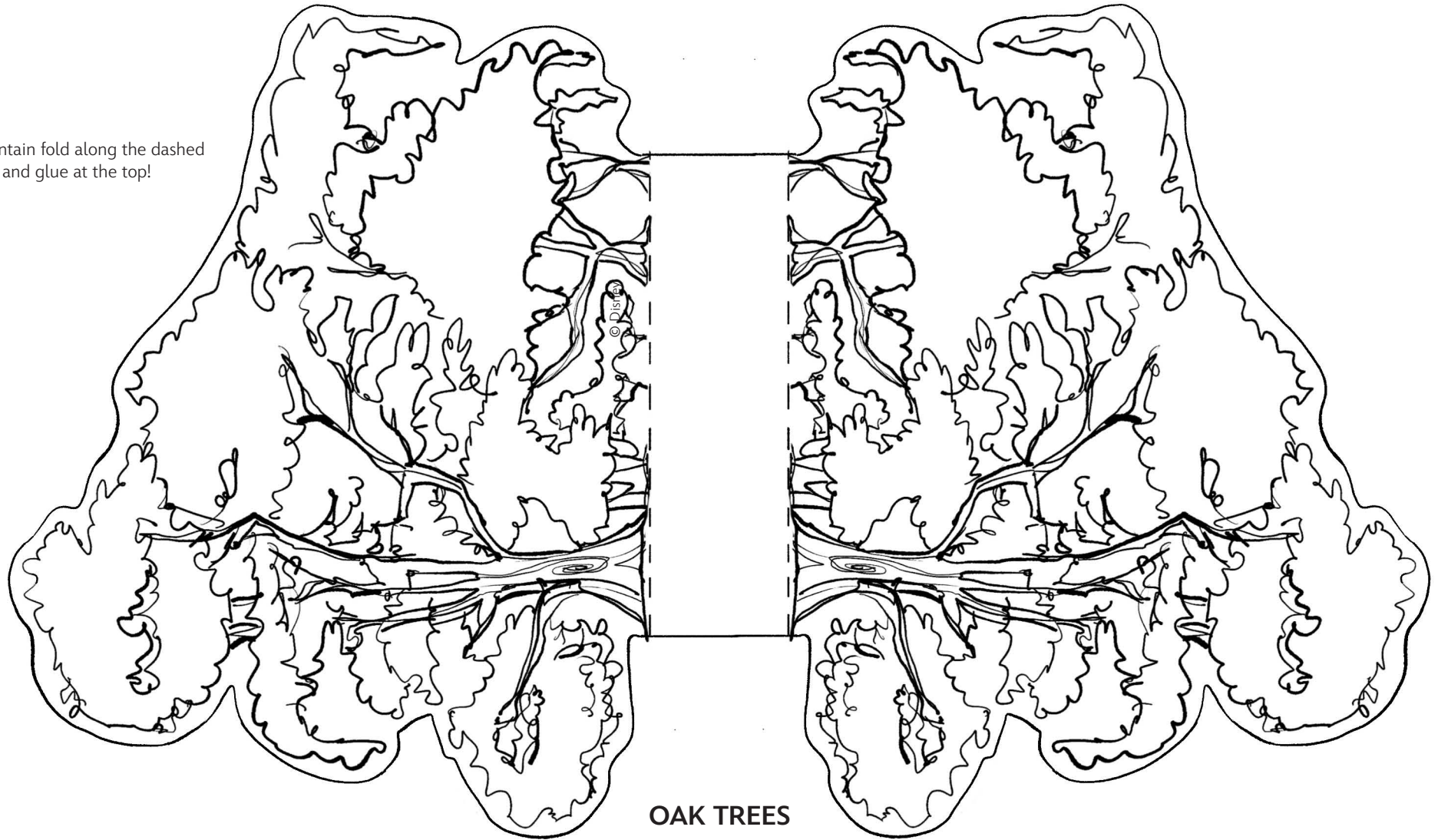
Disney Paper Parks

#DisneyMagicMoments | #DisneyPaperParks

HAUNTED MANSION at DISNEYLAND

Sheet Number: H

Mountain fold along the dashed lines and glue at the top!



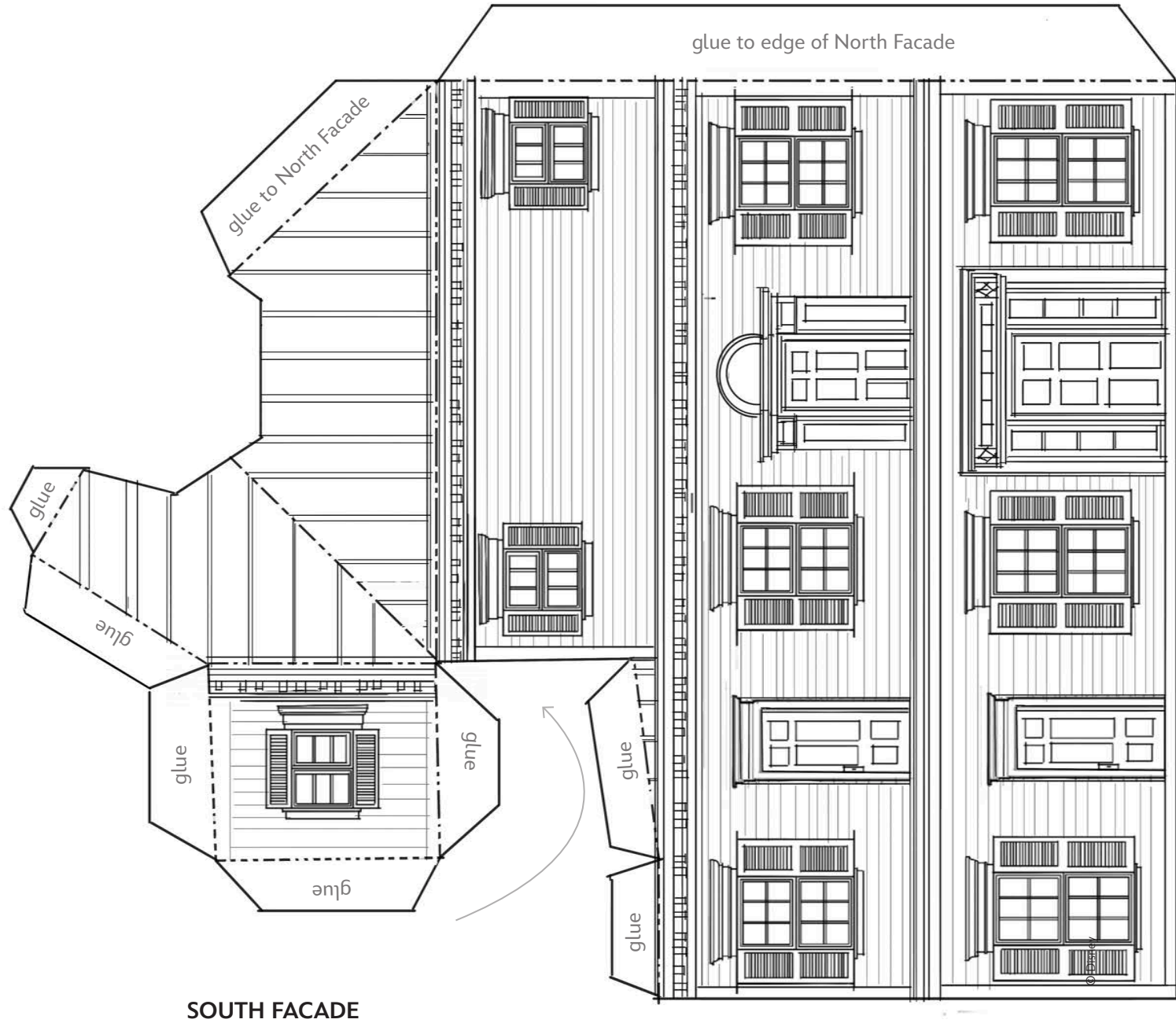
OAK TREES



© Disney

HAUNTED MANSION at DISNEYLAND

Sheet Number: 2

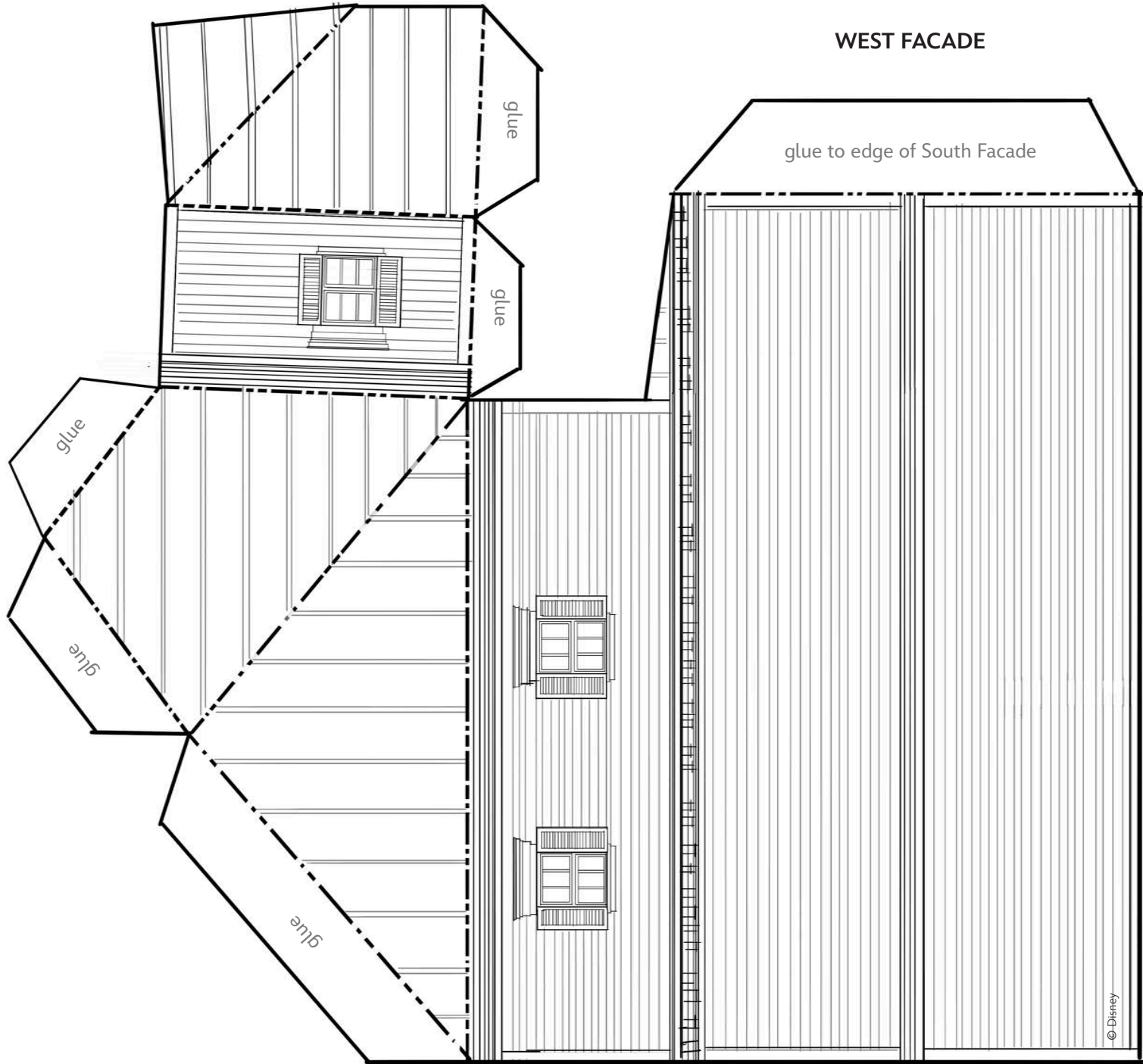


SOUTH FACADE



HAUNTED MANSION at DISNEYLAND

Sheet Number: 3

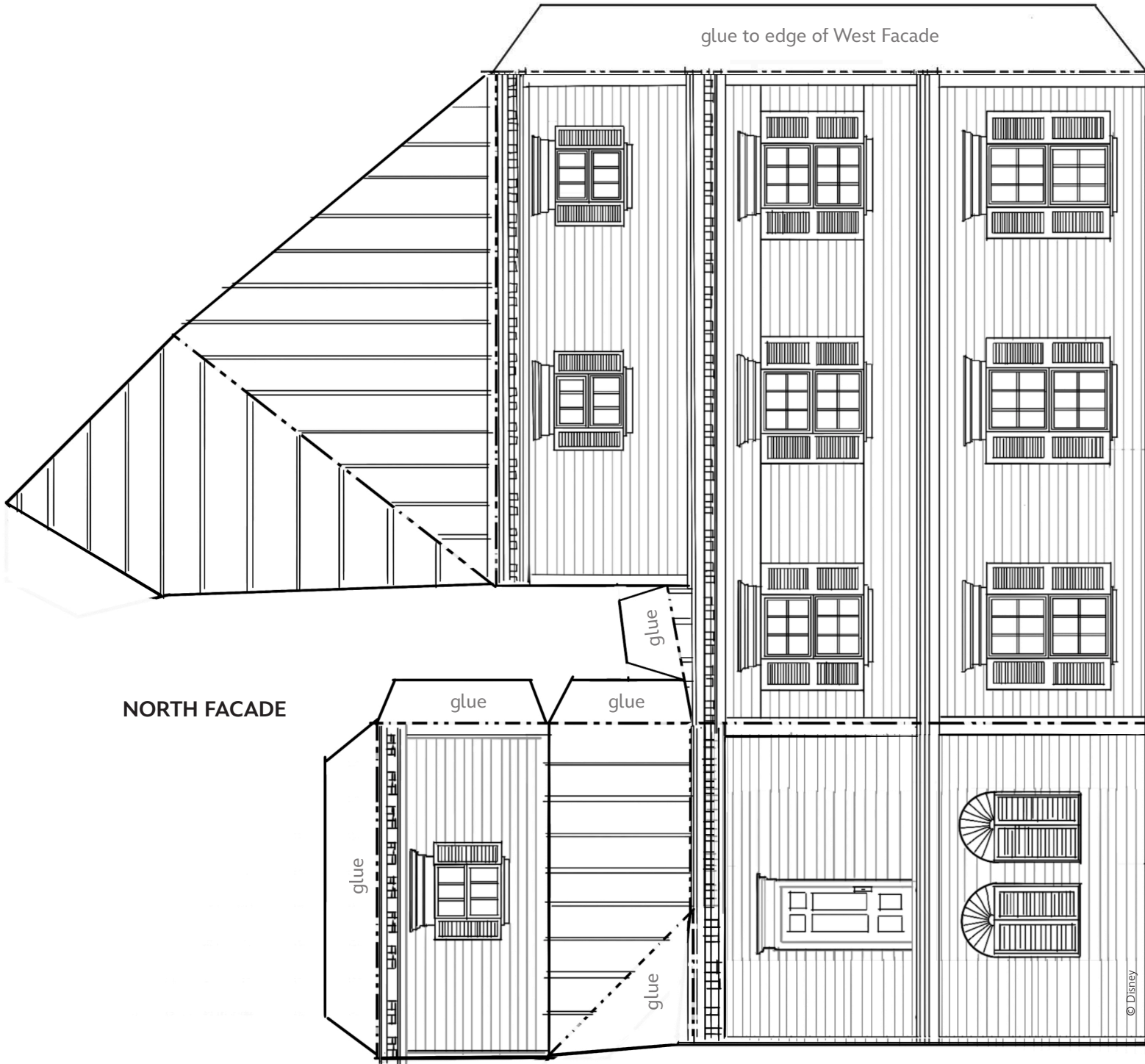


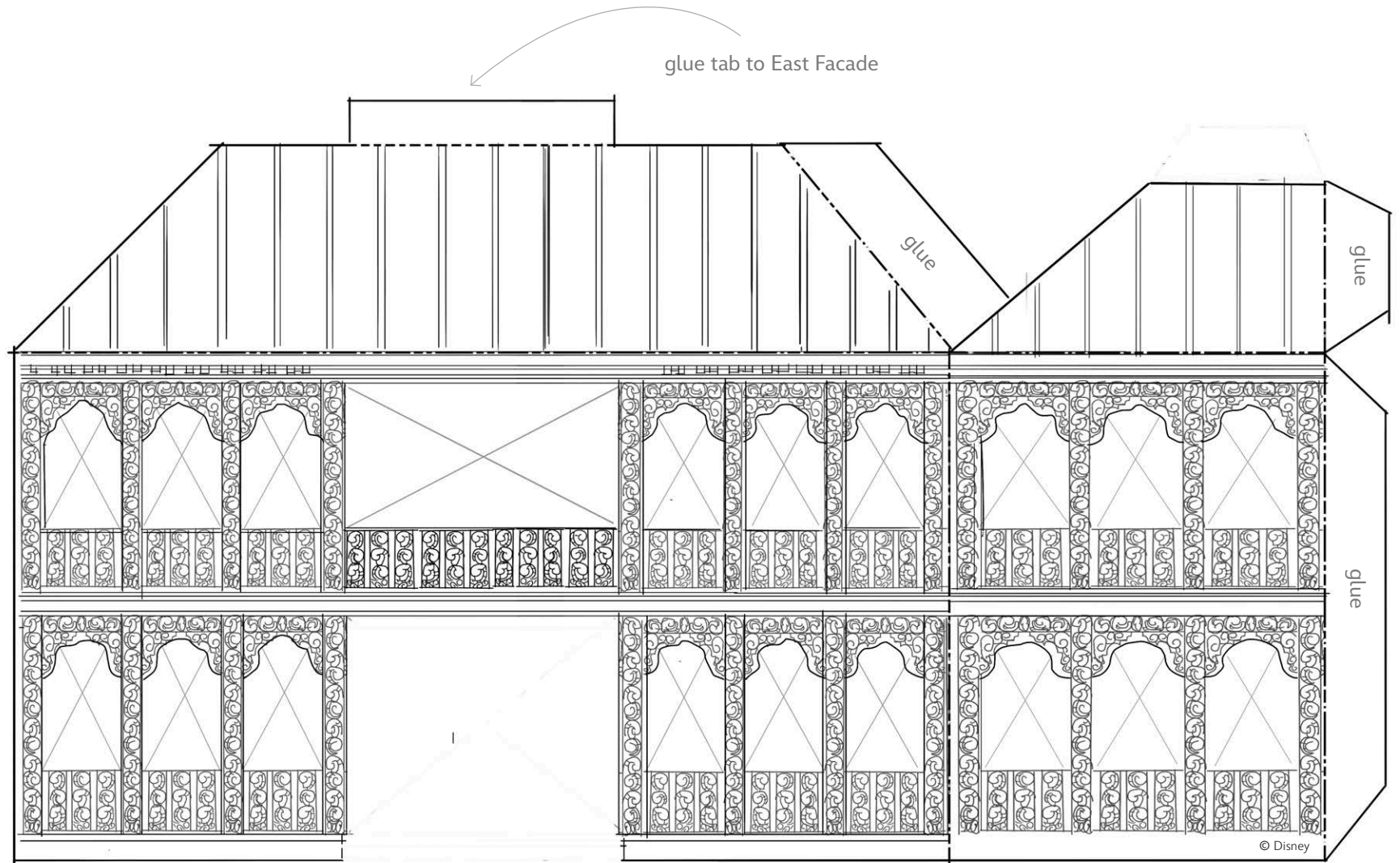


© Disney

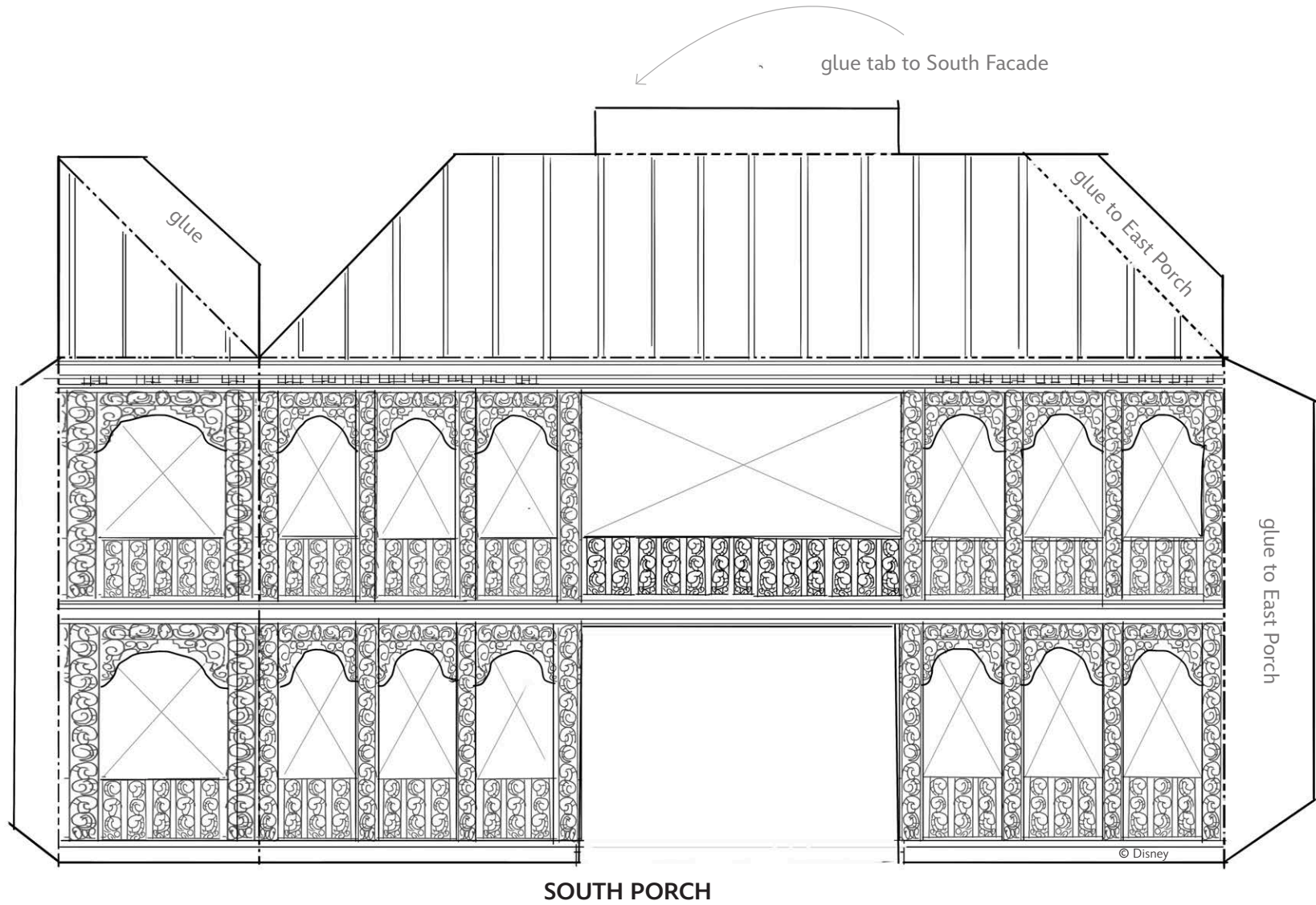
HAUNTED MANSION at DISNEYLAND

Sheet Number: 4





EAST PORCH

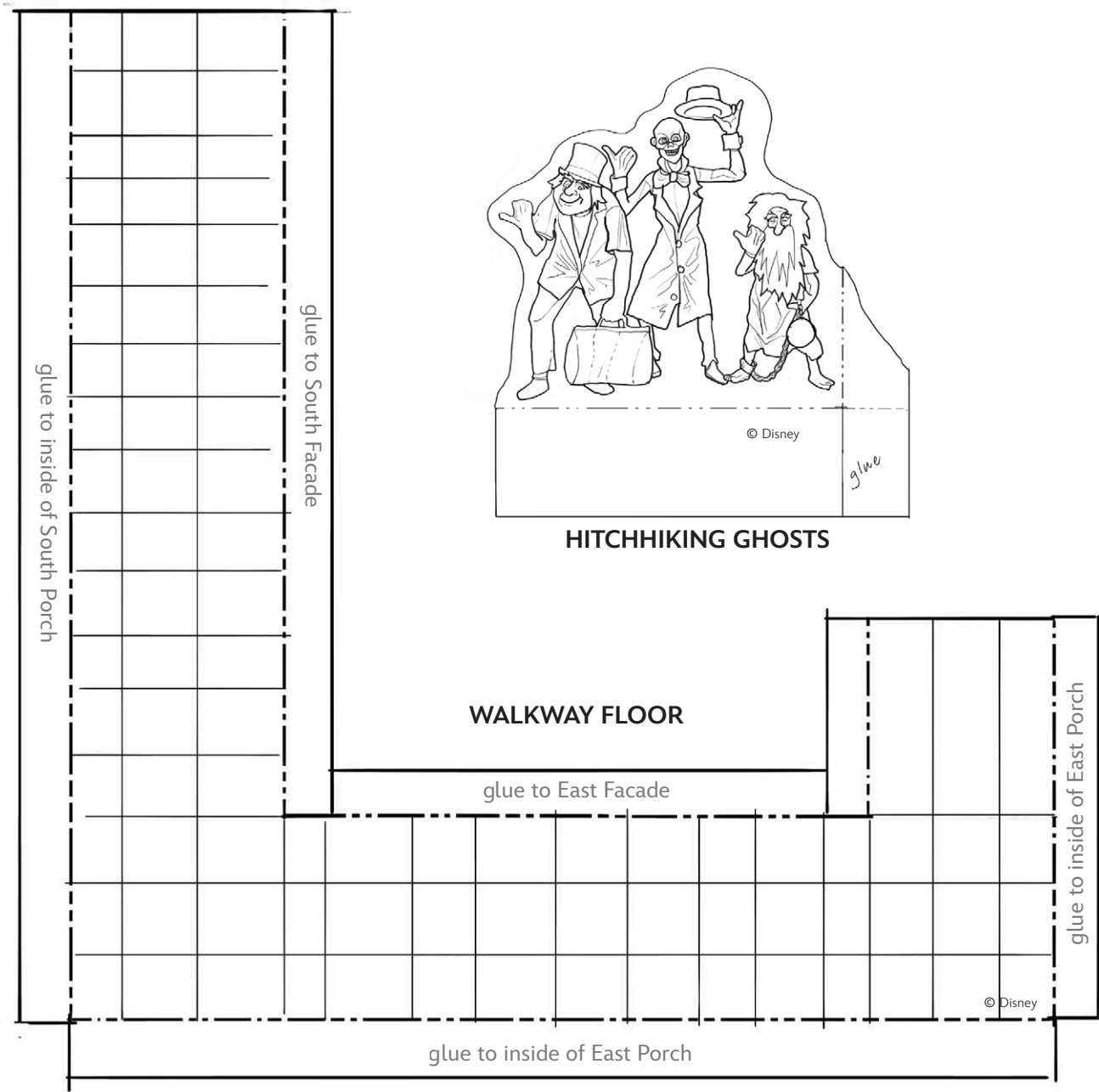




© Disney

HAUNTED MANSION at DISNEYLAND

Sheet Number: 7



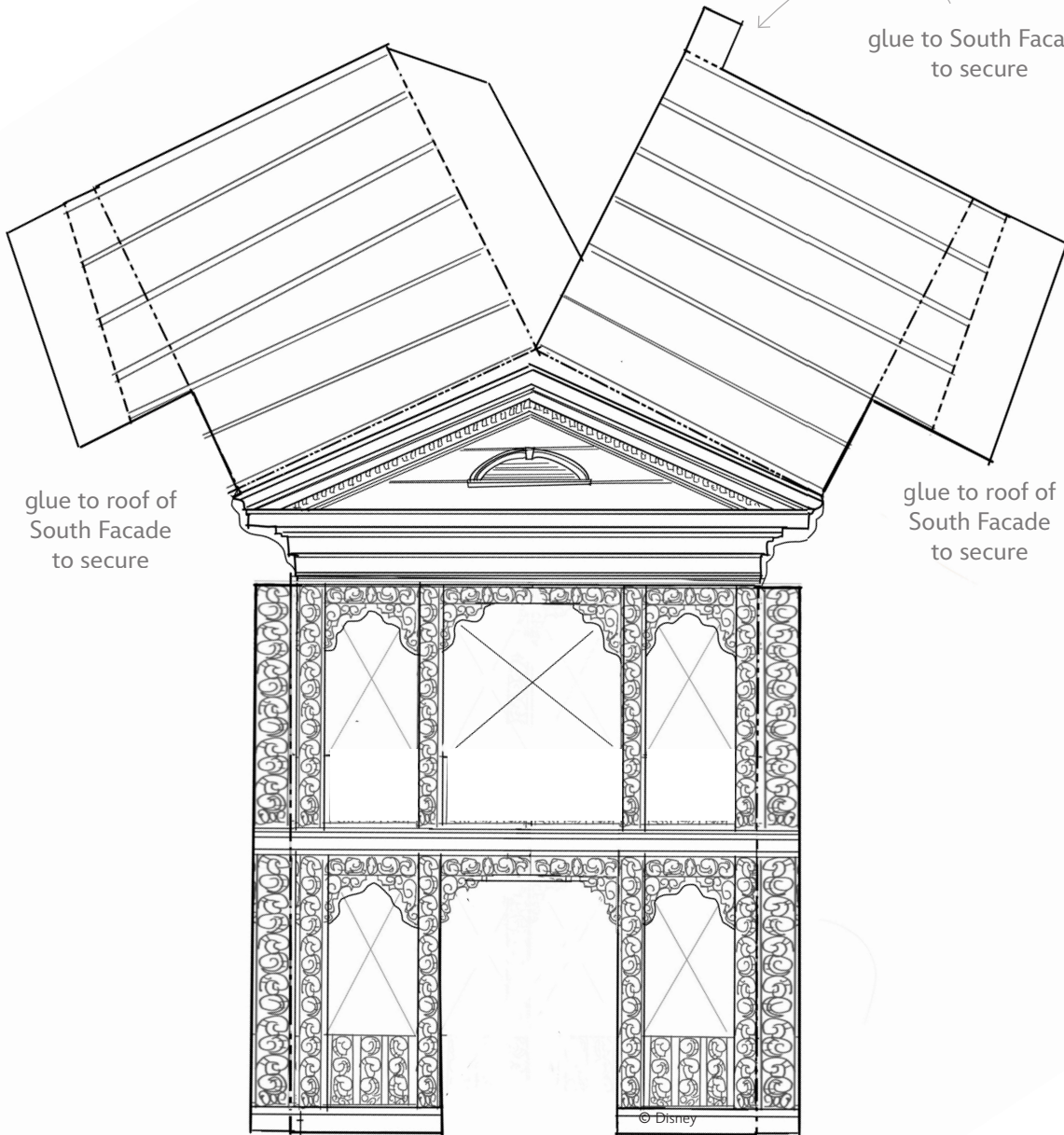


Disney Paper Parks

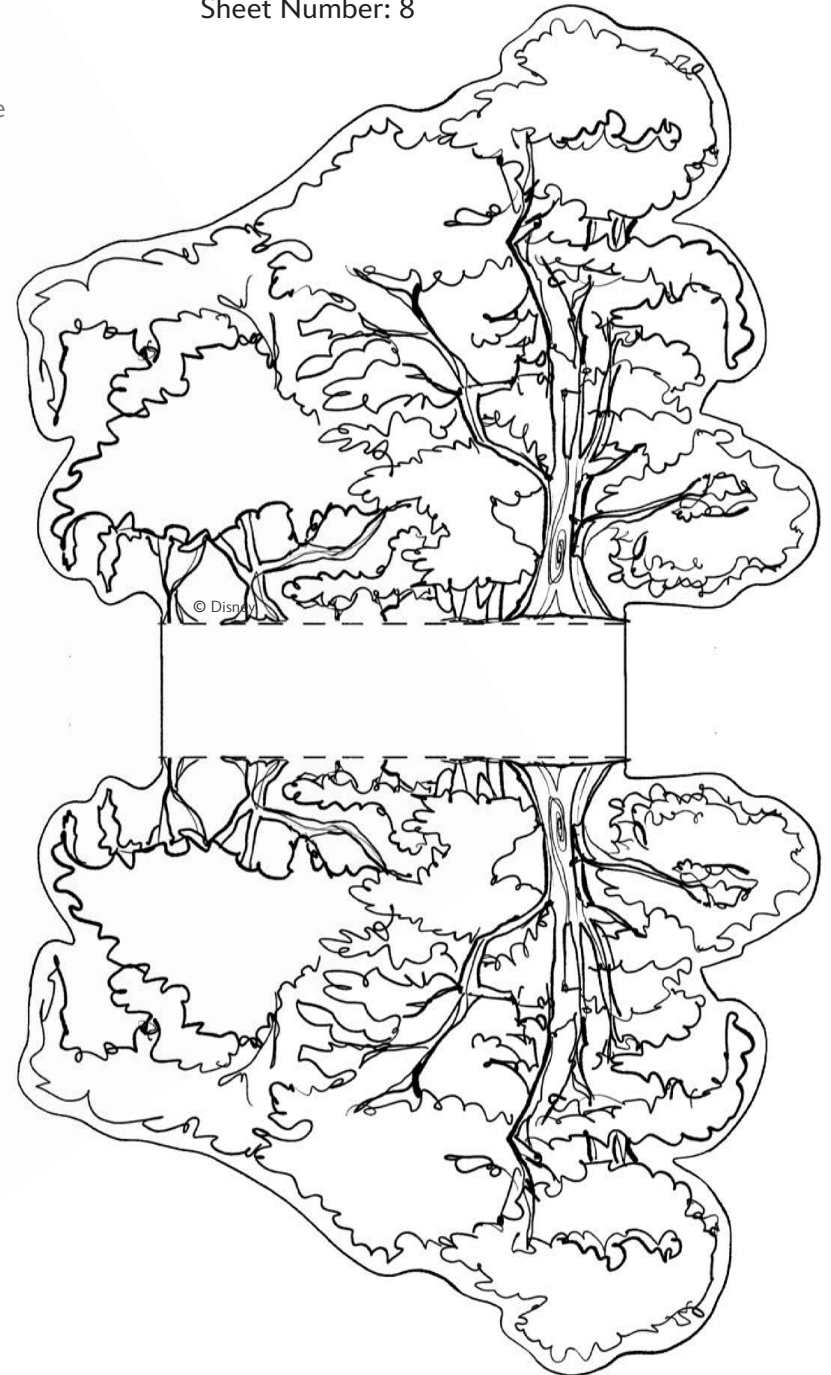
#DisneyMagicMoments | #DisneyPaperParks

HAUNTED MANSION at DISNEYLAND

Sheet Number: 8



SOUTH GABLE



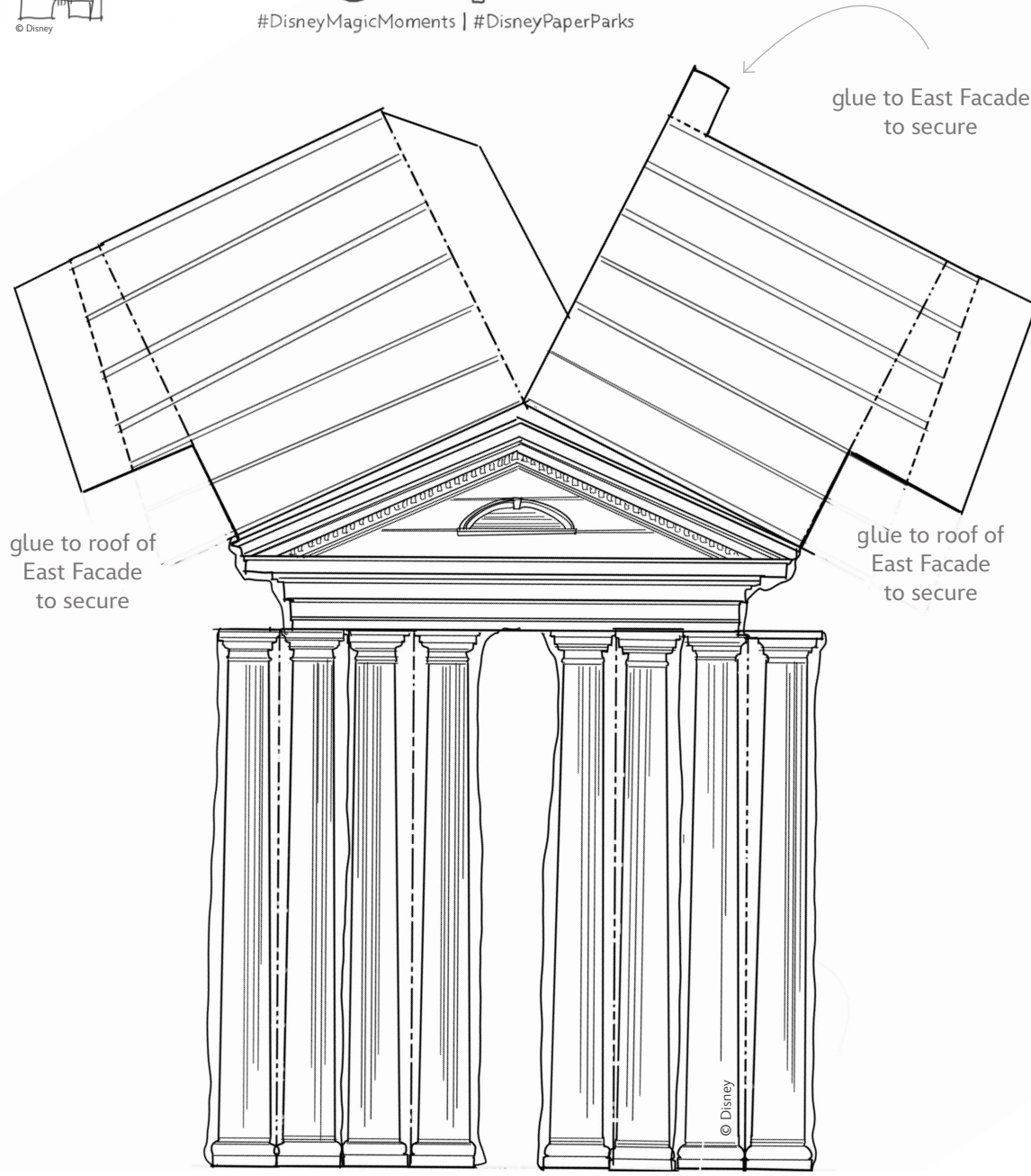


Disney Paper Parks

#DisneyMagicMoments | #DisneyPaperParks

HAUNTED MANSION at DISNEYLAND

Sheet Number: 9



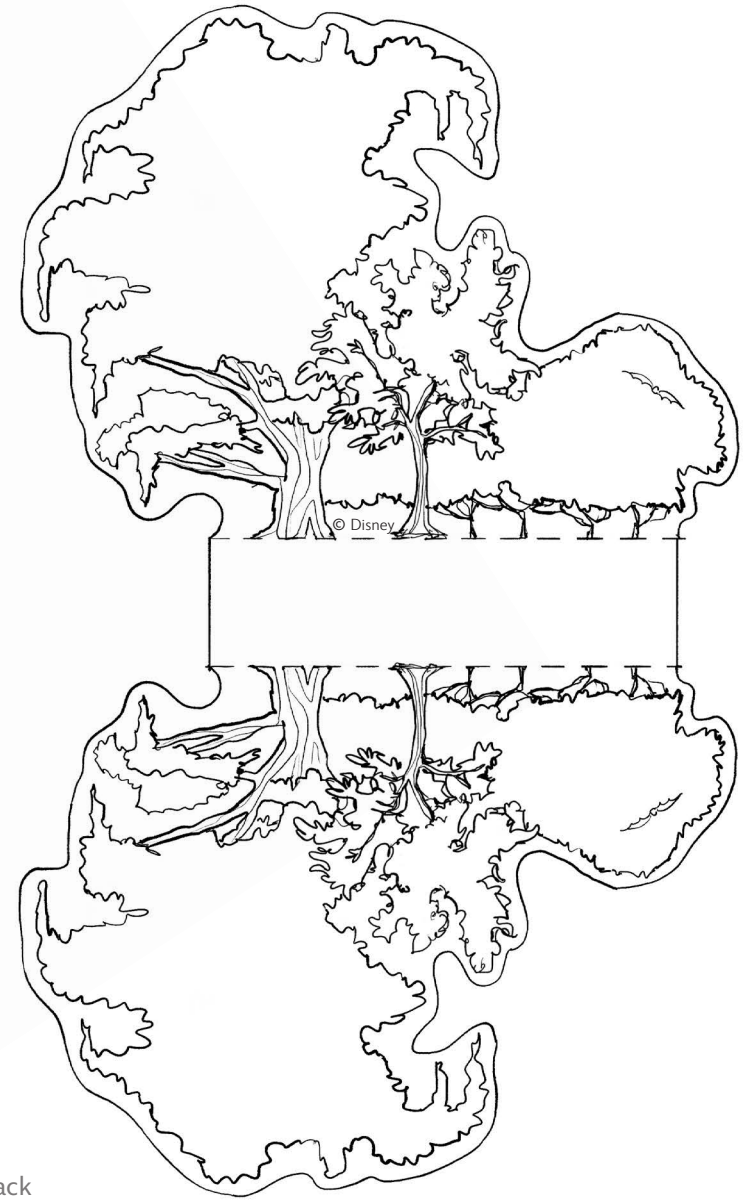
glue to roof of East Facade to secure

glue to East Facade to secure

glue to roof of East Facade to secure

EAST GABLE

Cut here and either fold columns back or add glue to add structure



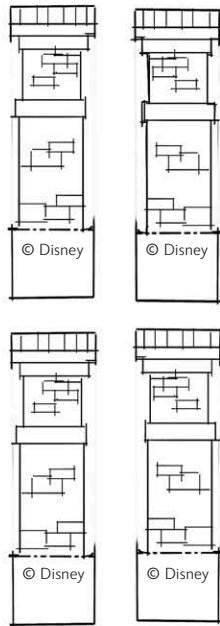


Disney Paper Parks

#DisneyMagicMoments | #DisneyPaperParks

HAUNTED MANSION at DISNEYLAND

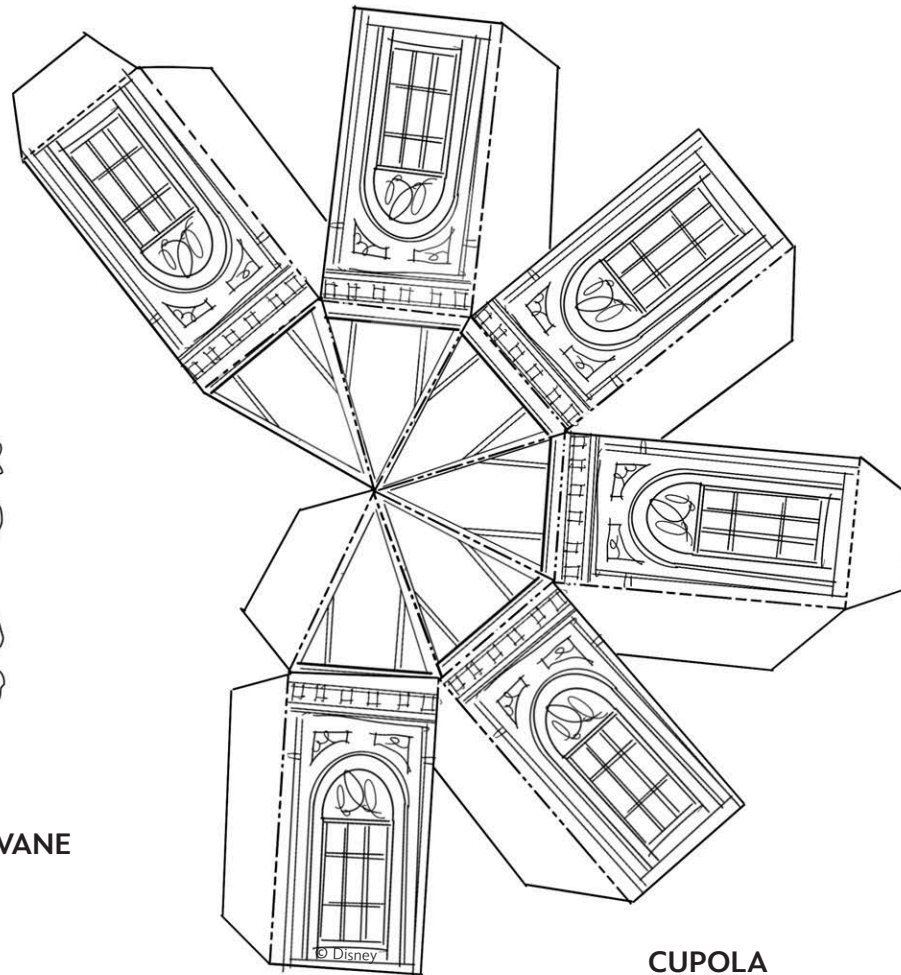
Sheet Number: 10



CHIMNEYS



WEATHERVANE



CUPOLA

