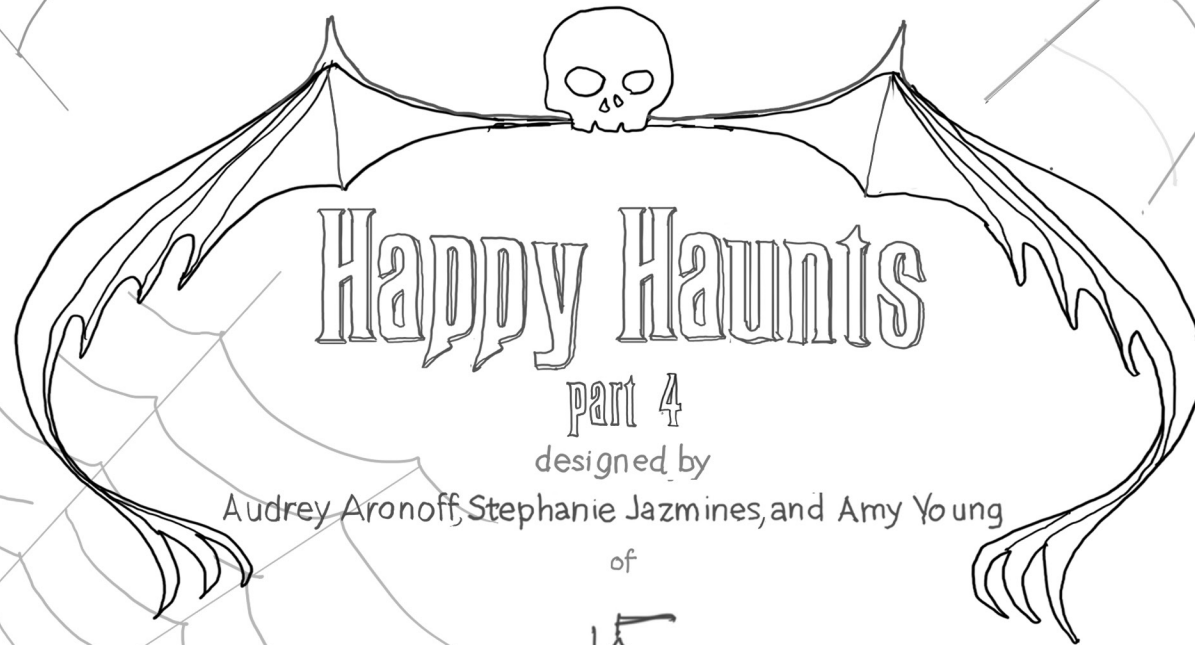


Disney Parks Blog

presents:

Disney Paper Parks



Happy Haunts

part 4

designed by

Audrey Aronoff, Stephanie Jazmines, and Amy Young

of



Walt Disney IMAGINEERING
© Disney

#DisneyMagicMoments | #DisneyPaperParks



Disney Paper Parks

#DisneyMagicMoments | #DisneyPaperParks

THE HAUNTED MANSION: THE GROUNDS

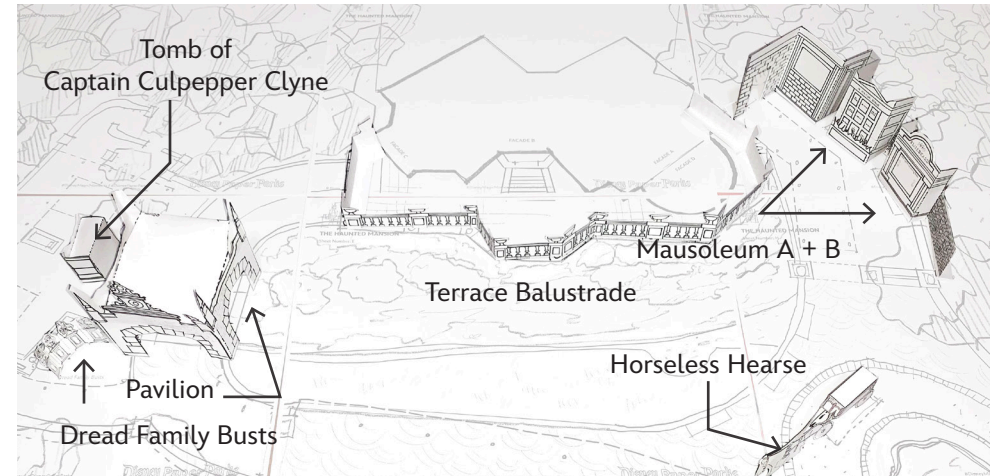
Sheet Numbers: 1, 2, 3, 4

HISTORY

Unique to the Magic Kingdom Park, the queue for the Haunted Mansion is fully interactive. Once a guest enters the grounds of the mansion, they are surrounded by a seemingly boundless realm of the supernatural, where they could see, hear, and interact with the ghostly residents even before entering the building.

Here we invite you to add to the exterior of the Haunted Mansion facades with decorative railings, crypts, tombs and busts to keep spirits alive and well.

INSTRUCTIONS



MATERIALS



Glue



Scissors



Crayons



String

GUIDE

Lines

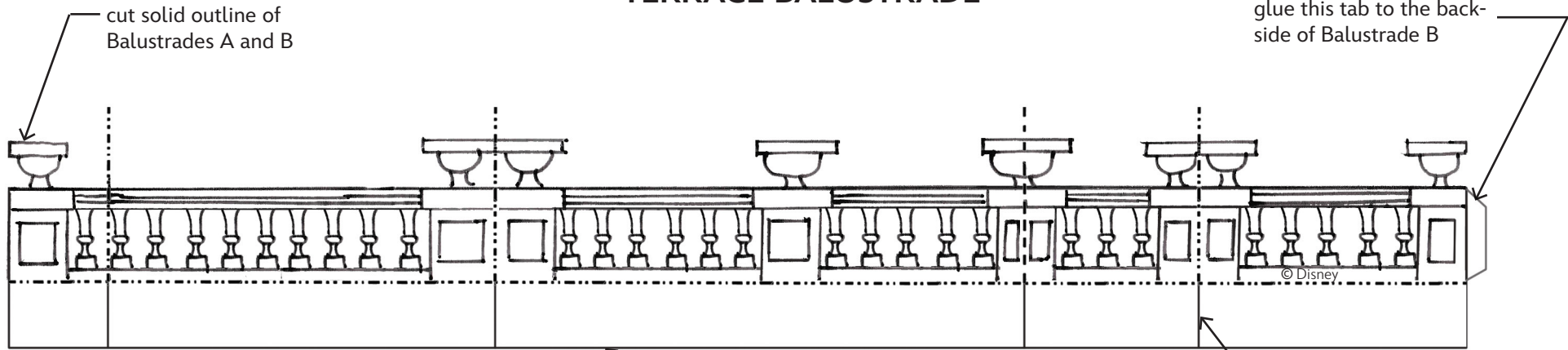
- Valley fold, fold in front
- - - - - Mountain fold, fold behind
- Cut
- X-ray or guide line.

1. Color the pages however you like.
2. Cut along the outside solid lines of each piece. Fold lines as indicated, according to the guide. Note: each piece will have a location noted on the plan from Happy Haunts, Part 3.
3. For the terrace: follow the direction on the sheet. This will sit on the outline on plan sheets D, E, G, and H.
4. For the pavilion: Fold all sides and glue at the edge. Fold the top down and carefully glue the tabs to the the side walls.
5. For the Dread Family busts: fold and place on area located on plan sheet B.
6. For the crypts and mausolea: Glue tabs and place the Captain's tomb where indicated on plan sheet B and the mausolea on plan sheets G and H.
7. For the Horseless Hearse: fold apply glue to all the tabs to make a box, then glue the ghostly horses at the heads to finish. Place in sheet H.

Please Note: When cutting with scissors and working with any of the materials listed above, adult participation and supervision is recommended.



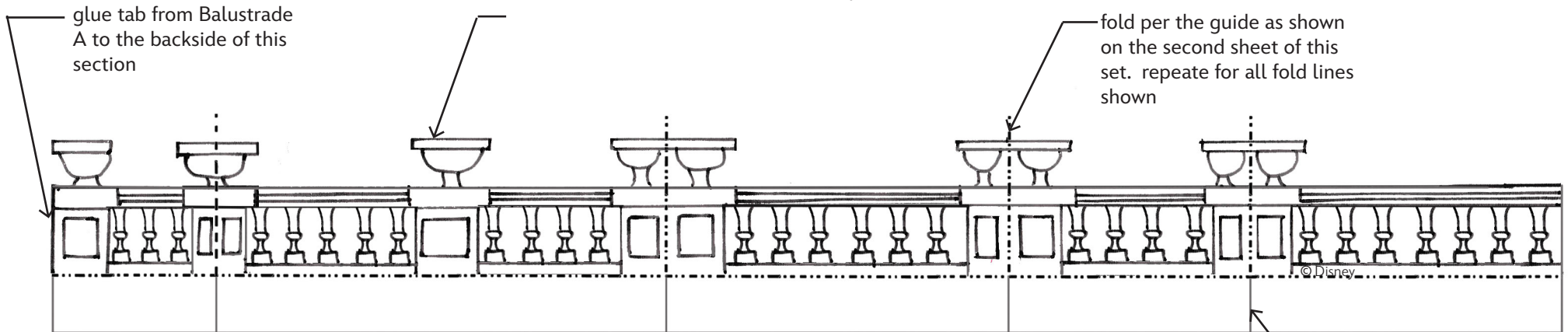
TERRACE BALUSTRADE



Balustrade A

after cutting fold back all base tabs and apply glue to the tabs that overlap

cut in between all tabs



Balustrade B

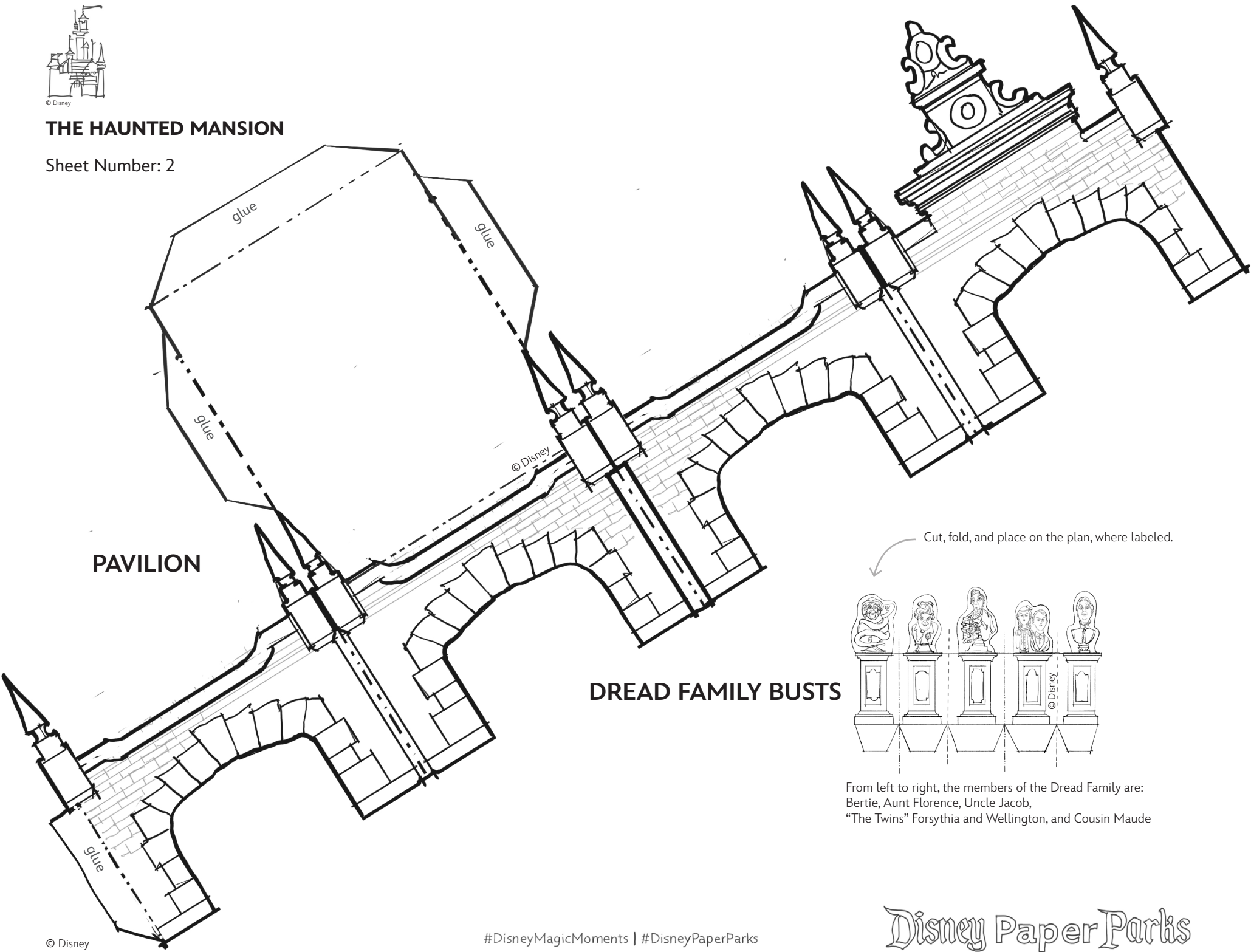
after cutting fold back all base tabs and apply glue to the tabs that overlap

cut in between all tabs

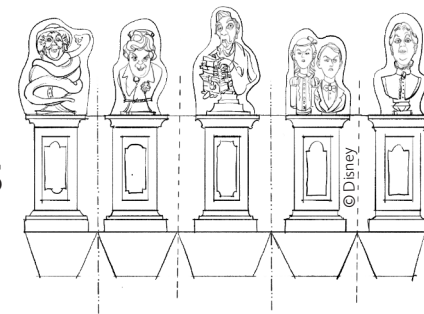


THE HAUNTED MANSION

Sheet Number: 2



Cut, fold, and place on the plan, where labeled.



From left to right, the members of the Dread Family are: Bertie, Aunt Florence, Uncle Jacob, "The Twins" Forsythia and Wellington, and Cousin Maude

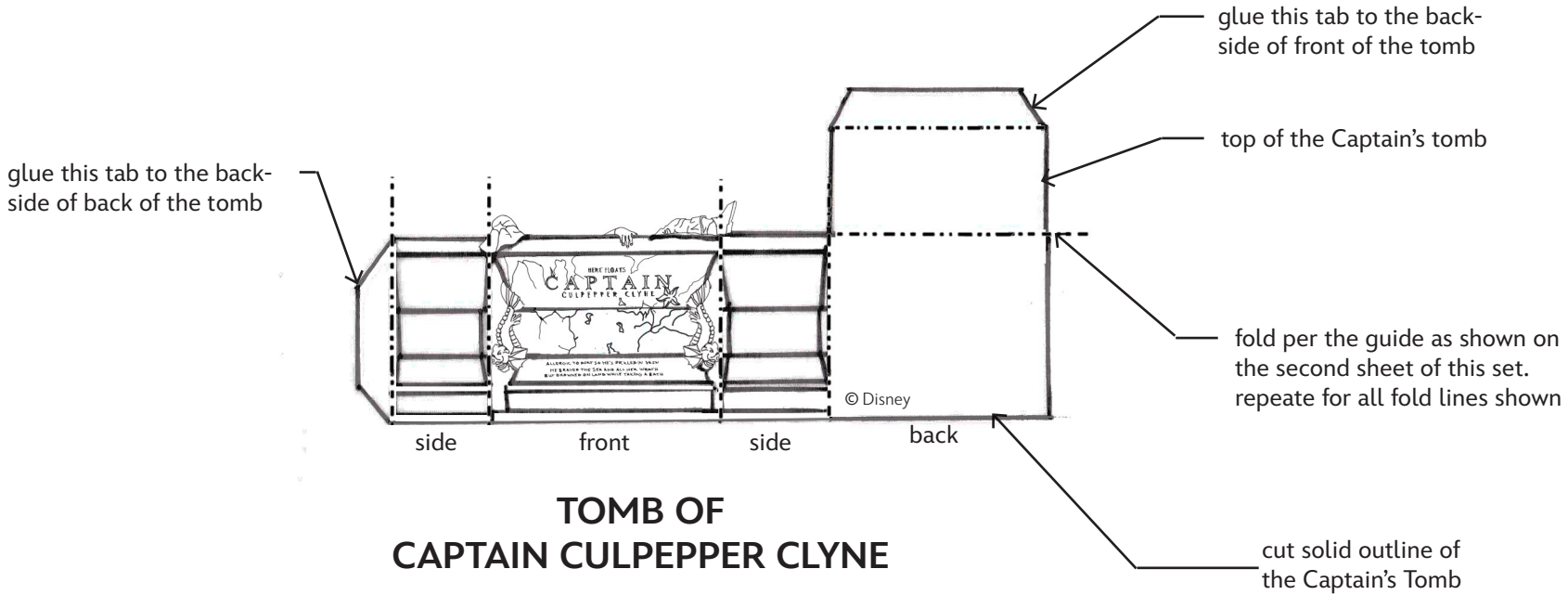


Disney Paper Parks

#DisneyMagicMoments | #DisneyPaperParks

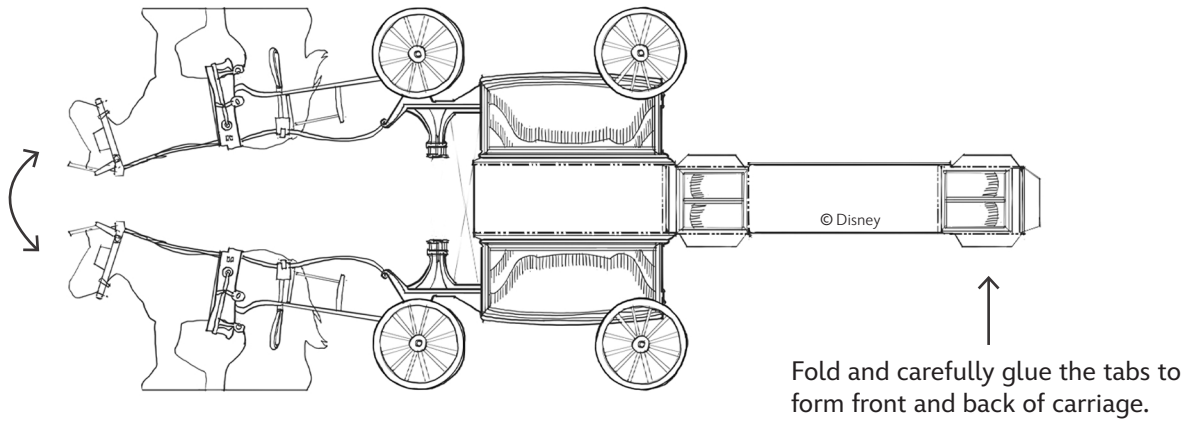
THE HAUNTED MANSION

Sheet Number: 3



TOMB OF CAPTAIN CULPEPPER CLYNE

Glue the heads of the horse silhouettes together to finish. Make sure you glue the carriage together first!



HORSELESS HEARSE



Disney Paper Parks

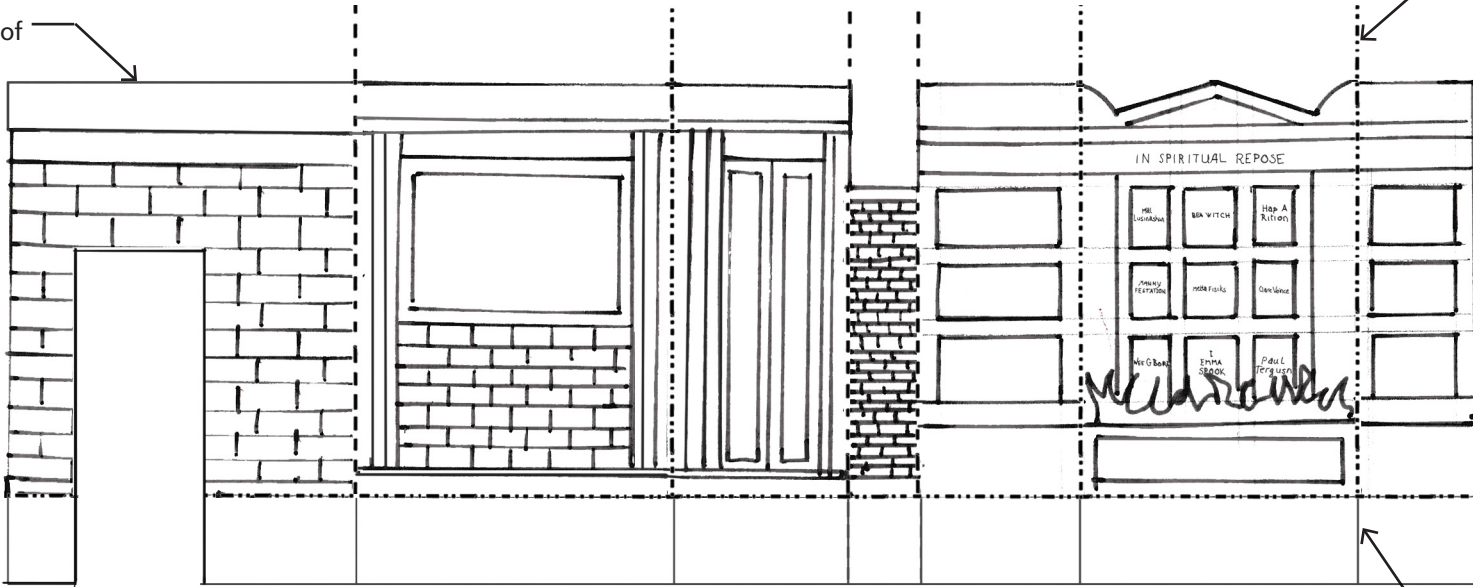
#DisneyMagicMoments | #DisneyPaperParks

THE HAUNTED MANSION

Sheet Number: 4

fold per the guide as shown on the second sheet of this set. repeat for all fold lines shown

cut solid outline of Mausoleum A



glue tab from Mausoleum B to the backside of this section

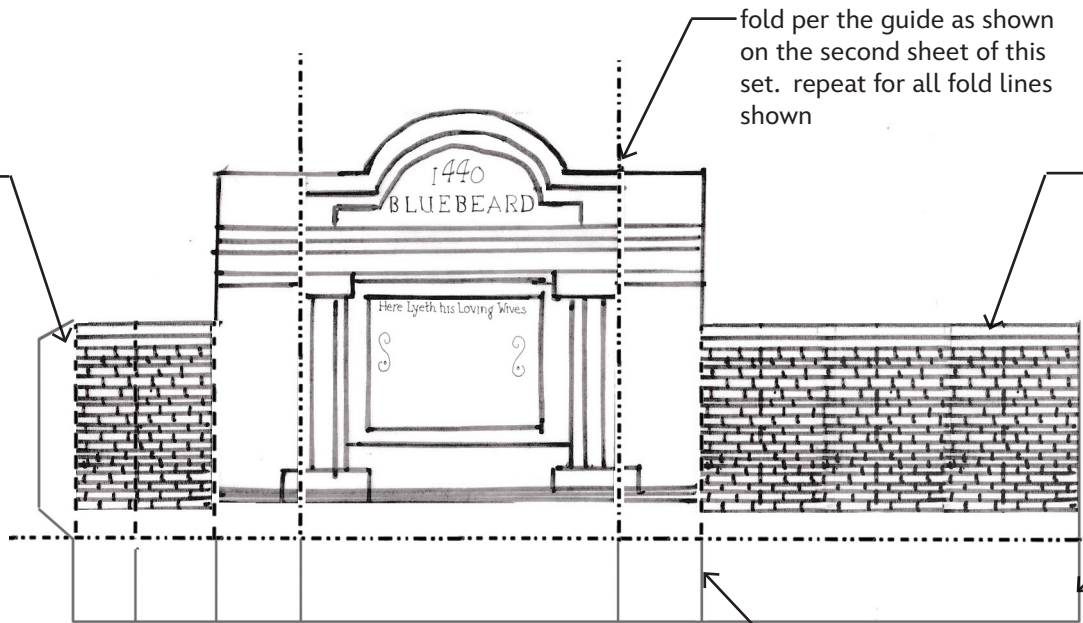
after cutting fold back all base tabs and apply glue to the tabs that overlap

Mausoleum A

fold per the guide as shown on the second sheet of this set. repeat for all fold lines shown

cut inbetween all tabs

glue this tab to the backside of Mausoleum A



cut solid outline of Mausoleum B

after cutting fold back all base tabs and apply glue to the tabs that overlap

Mausoleum B

cut inbetween all tabs



Disney Paper Parks

#DisneyMagicMoments | #DisneyPaperParks

THE HAUNTED MANSION: THE GRAND HALL and MADAME LEOTA'S SÉANCE CIRCLE

Sheet Numbers: 5, 6, 7, 8, 9, 10, 11

HISTORY

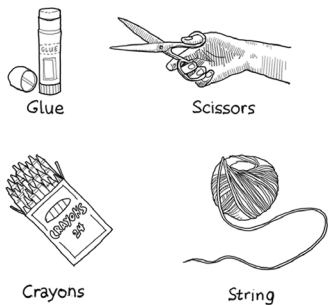
The Haunted Mansion Grand Hall depicts a formal birthday celebration unlike any other. In our diorama we have chosen to build the lively Happy Haunts, dancing the night away at this spirited party.

The room also features a pipe organ complete with a bat sheet music stand and dripping candles. The party attendees ghoulishly twirl under the “Dueling Portraits,” which was Disney Legend and Imagineer Marc Davis’ original concept.

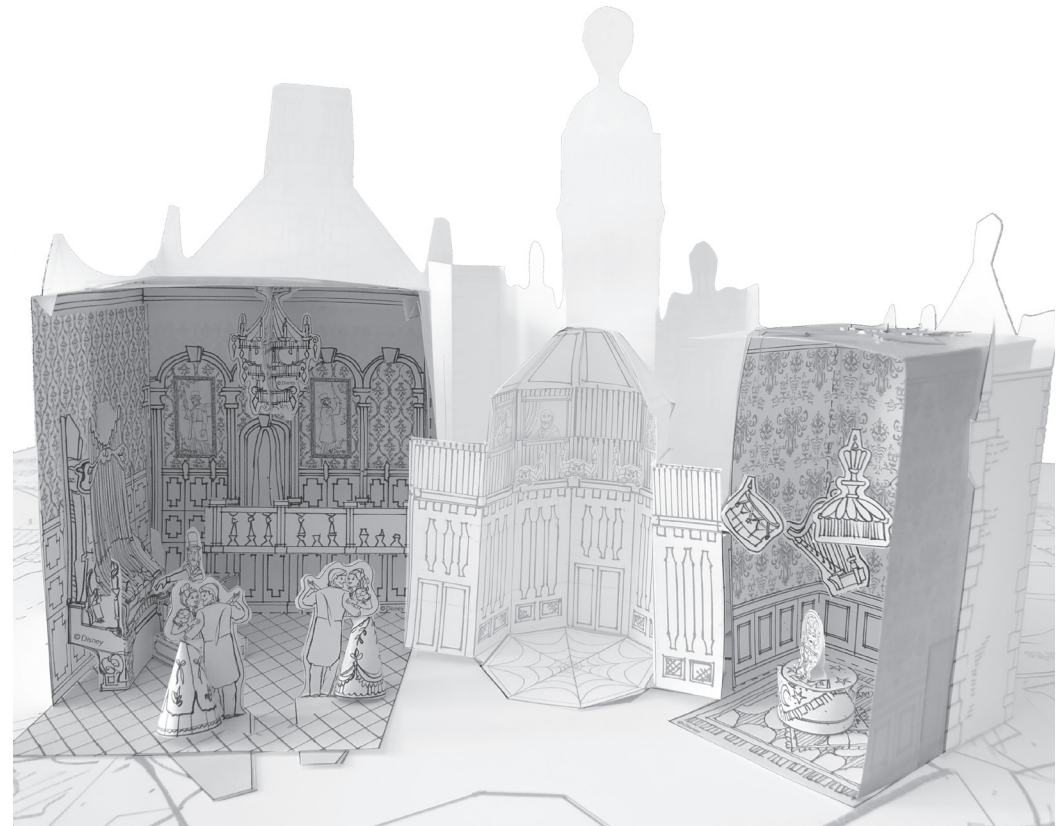
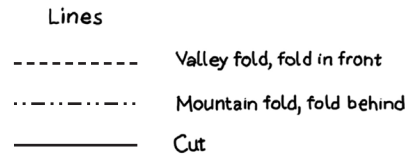
Madame Leota’s Séance Circle is included too! Enjoy placing all the levitating musical instruments with string and assembling her fortune telling crystal ball.

INSTRUCTIONS

MATERIALS



GUIDE



THE GRAND HALL

MADAME LEOTA'S SÉANCE CIRCLE

Please Note: When cutting with scissors and working with any of the materials listed above, adult participation and supervision is recommended.

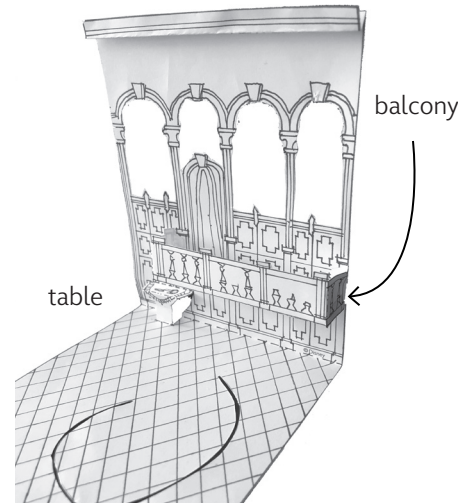


THE HAUNTED MANSION: THE GRAND HALL and MADAME LEOTA'S SÉANCE CIRCLE

Sheet Numbers: 5, 6, 7, 8, 9, 10, 11

INSTRUCTIONS

1. Color the pages.
2. Cut along solid lines where indicated. Fold tabs and pages where indicated.
3. Assemble piece 4 by gluing the tabs as shown and you will have an open-sided box when finished.
4. Assemble piece 2 by folding and gluing on the balcony as shown. Do not glue to the wall yet. The wallpaper (piece 5) goes behind and will show through the holes in the arches. Cut the sides of the table as shown. Fold according to guide to make the table pop up and out of the wall.
5. Assemble piece 5 by placing behind the constructed piece 2. Place piece 9 on right side of box and glue in place, then glue ceiling to top of box (piece 1). No other gluing is necessary for the wall treatments.
6. Assemble organ, piece 3 as shown and place against wall to the left. No need to glue to wall or floor.
7. Assemble chandeliers by gluing all three backs together and gluing to ceiling as shown or put anywhere you would like.
8. Place Dueler portraits in arches and glue. (pieces 10 and 11).
9. Assemble the Organist (piece 12) and glue to base, piece 13.
10. Assemble Dancers by creating a cone with pieces 16 and 19 and gluing end to keep the cone shape. Glue tabs on pieces 16 and 19 between Dancers as shown. Place tab in floor slot so they can move and dance.
11. For Leota's Séance Circle: Assemble piece 27 by gluing the tabs as shown and you will have an open-sided box when finished.
12. To assemble the table (piece 22), glue tabs to create a cylinder.
13. Assemble crystal ball by gluing the tip of the crystal ball together in the back.
14. Glue chandelier and musical instruments together with a string or thread in between and hang from the ceiling anywhere you want.
15. Place floor rug as shown.



The Grand Hall:
Balcony Detail



The Grand Hall:
Dancers, Organ, and Organist

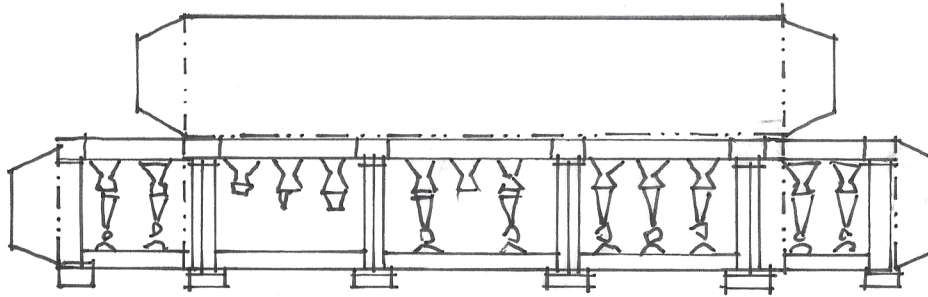


Disney Paper Parks

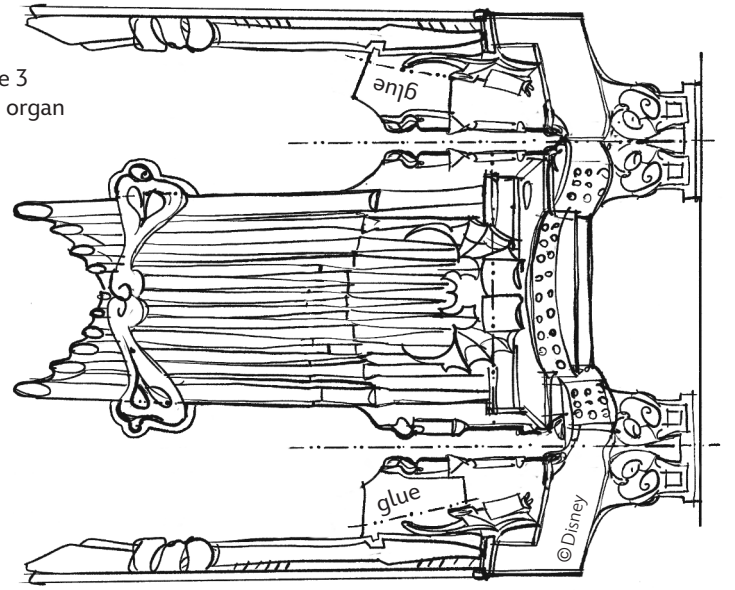
#DisneyMagicMoments | #DisneyPaperParks

THE HAUNTED MANSION: GRAND HALL

Sheet Number: 5

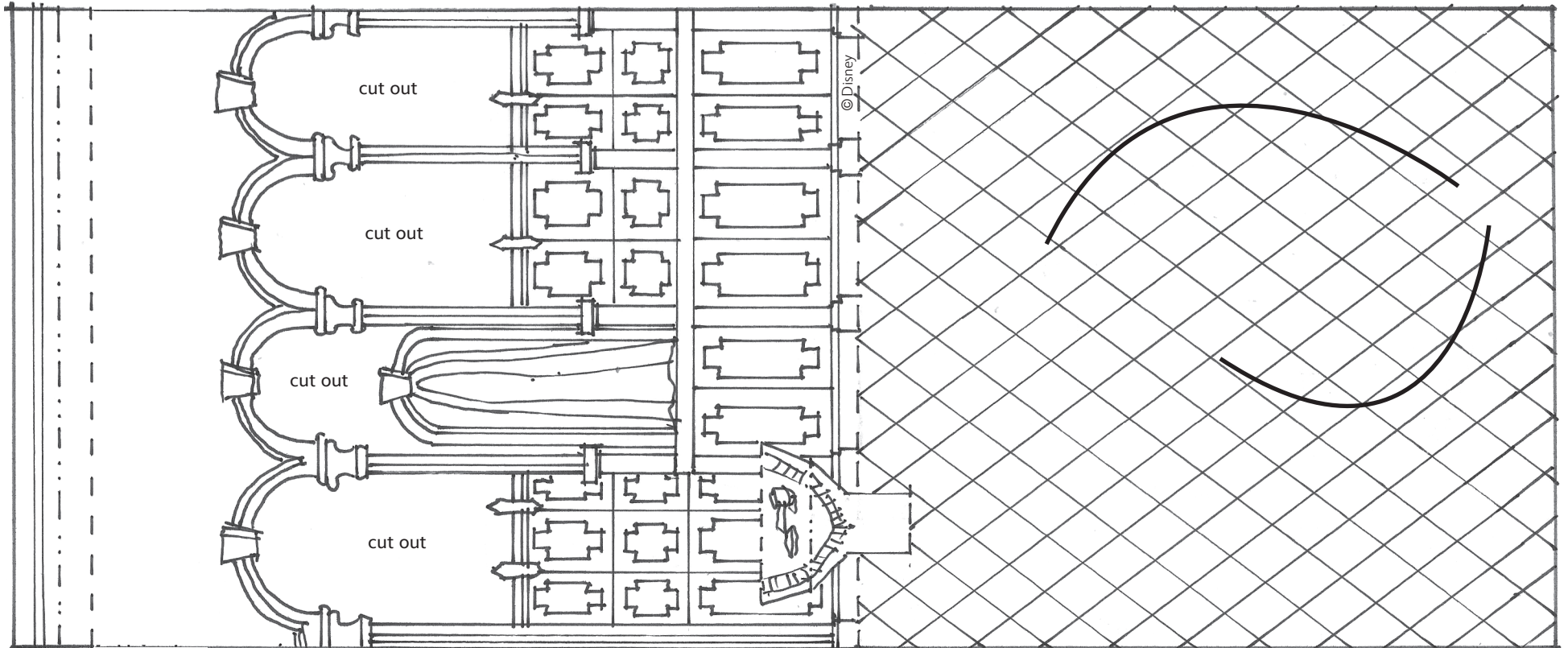


piece 2
back wall



piece 3
pipe organ

cut 2 slits in floor to place Dancers.



cut on line around table, leaving the top and bottom attached. See image.



THE HAUNTED MANSION: GRAND HALL

Sheet Number: 6

piece 4
Grand Hall
base

glue this tab to back of side a

side a

glue this tab to back of side a

glue this tab to back of side b

side b

© Disney

glue this tab to back of side b



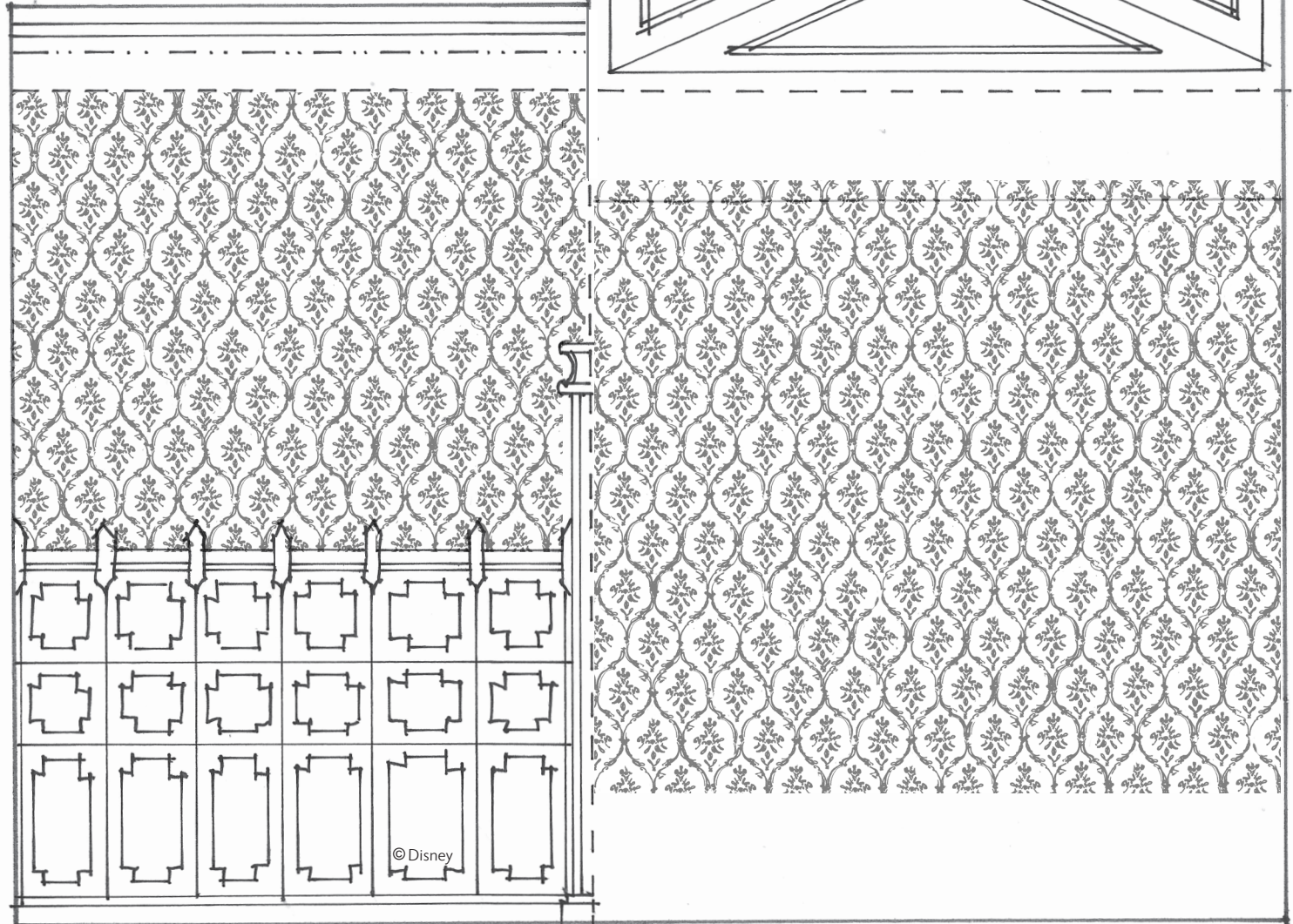
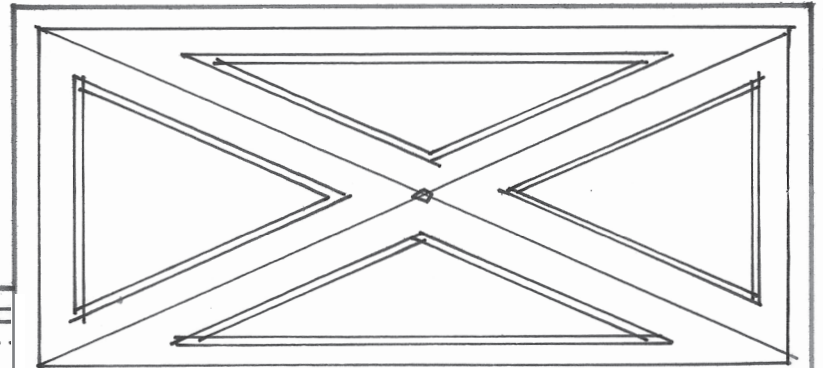
Disney Paper Parks

#DisneyMagicMoments | #DisneyPaperParks

THE HAUNTED MANSION: GRAND HALL

Sheet Number: 7

piece 5
Grand Hall
side / back wall and
ceiling



© Disney



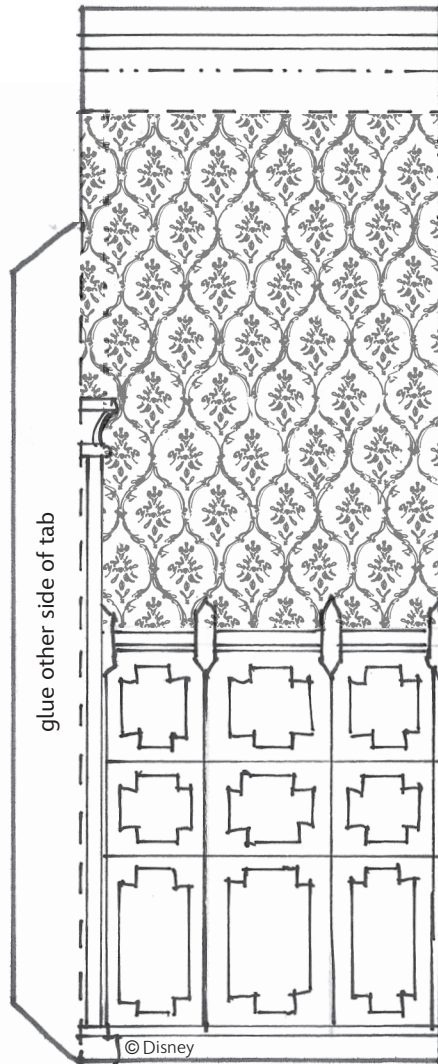
Disney Paper Parks

#DisneyMagicMoments | #DisneyPaperParks

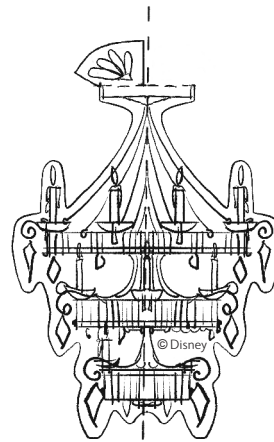
THE HAUNTED MANSION: GRAND HALL

Sheet Number: 8

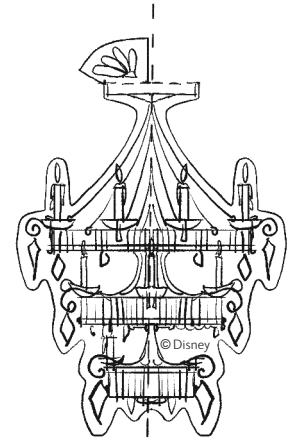
piece 9
Grand Hall
right side wall



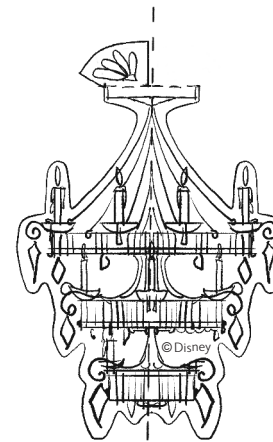
piece 6
chandelier side one



piece 8
chandelier side three



piece 7
chandelier side two





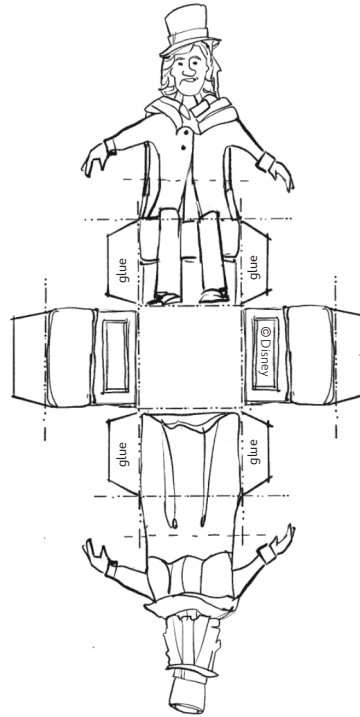
Disney Paper Parks

#DisneyMagicMoments | #DisneyPaperParks

AUNTED MANSION: GRAND HALL

Sheet Number: 9

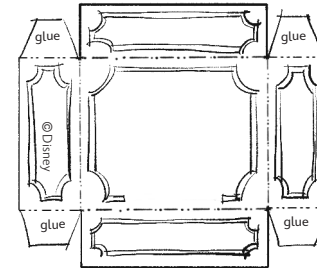
piece 12
Grand Hall
Organist



piece 10
Grand Hall
left Dueler



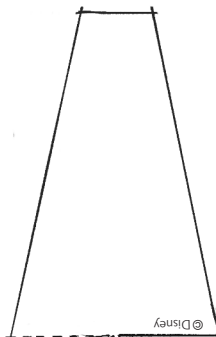
piece 11
Grand Hall
right Dueler



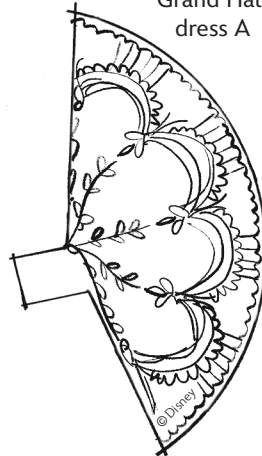
piece 13
base for Organist



piece 14
Grand Hall
Dancers A



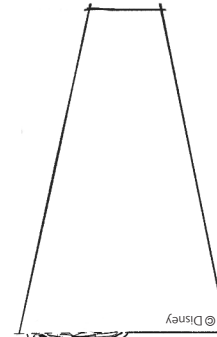
piece 15
Grand Hall
Dancers A



piece 16
Grand Hall
dress A



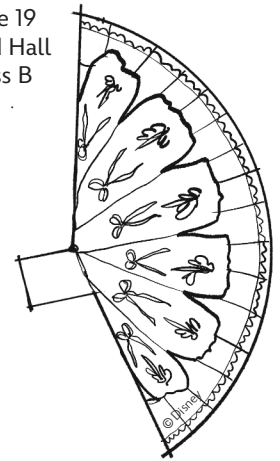
piece 17
Grand Hall
Dancers B



piece 18
Grand Hall
Dancers B



piece 19
Grand Hall
dress B



glue both sides of Dancers together with tab from piece 16 or 17 in between. See image

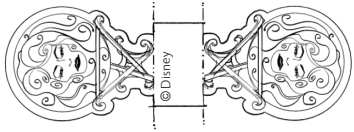


Disney Paper Parks

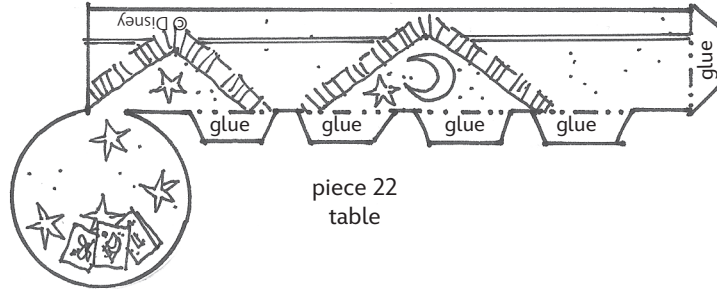
#DisneyMagicMoments | #DisneyPaperParks

THE HAUNTED MANSION: MADAME LEOTA'S SÉANCE CIRCLE

Sheet Number: 10

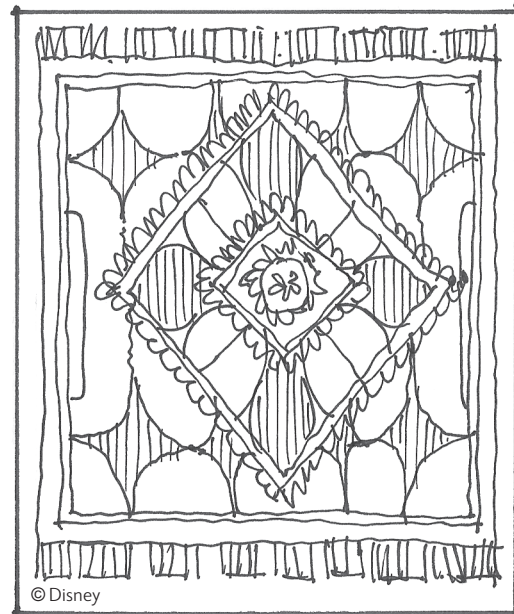
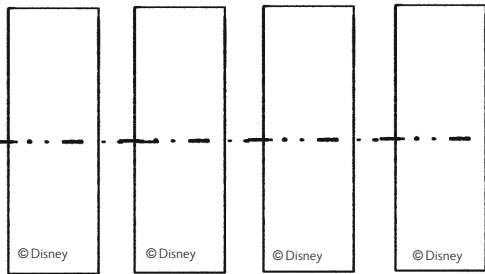


piece 20
Madame Leota's
crystal ball

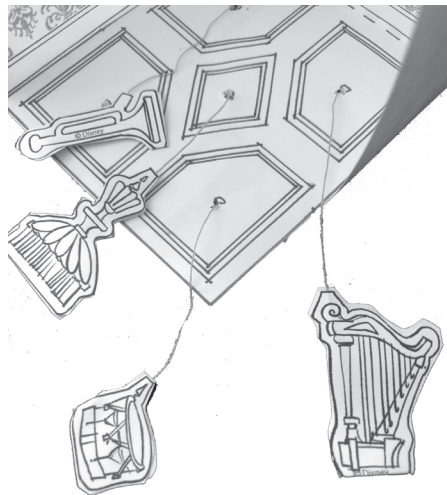


piece 22
table

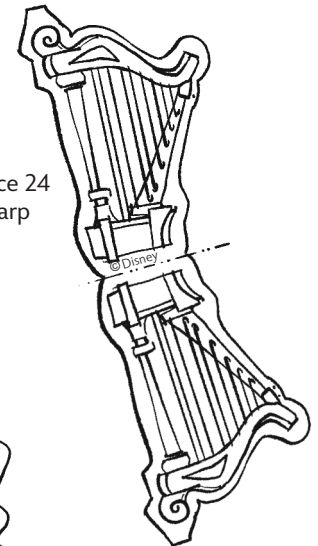
4 tabs for pieces
23,24,25 and 26



piece 21
floor rug

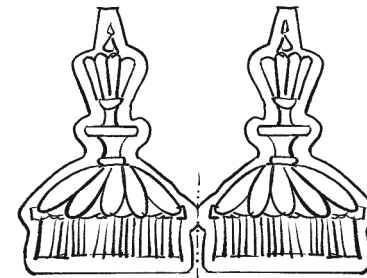


Madame Leota's Séance Circle:
Ceiling Detail

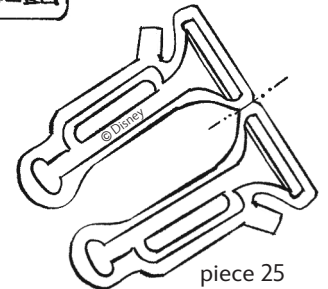
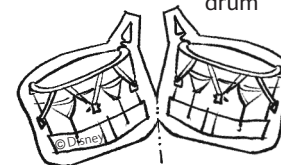


piece 24
harp

piece 23
chandelier



piece 26
drum



piece 25
trumpet



© Disney

side c

© Disney

Disney Paper Parks

THE HAUNTED MANSION:

MADAME LEOTA'S

SÉANCE CIRCLE

Sheet Number: 11

piece 27
parlor walls
and ceiling

glue this tab to back of side c.

glue this tab to back of side c.

glue this tab to back of side d.

glue this tab to back of side d.

n



Disney Paper Parks

#DisneyMagicMoments | #DisneyPaperParks

HAPPY HAUNTS WEARABLES

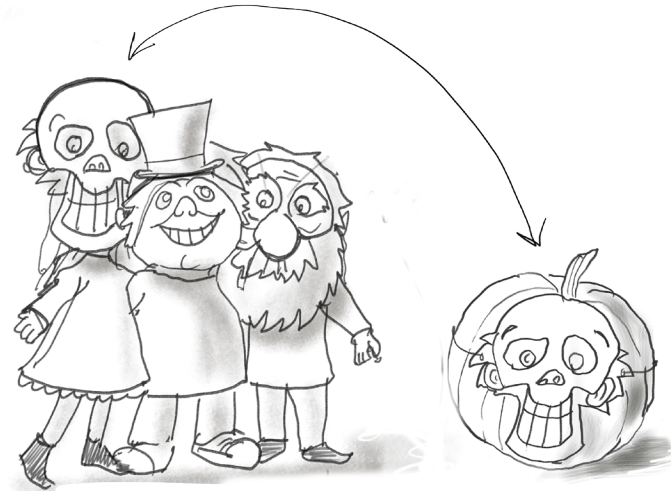
Sheet Numbers: 12, 13, 14, 15, 16, 17, 18, 19, 20

HISTORY

With your Haunted Mansion constructed, it is time to go socialize with all those grim-grinning ghosts. You can now greet all those foolish mortals who come to visit or be the guest of honor at the next swinging soiree.

Adjust your bow ties, don your collars and fascinators, or perhaps come as a Hitchiking Ghost yourself. If you've no need for extra frills yourself, you can always dress your pumpkins up.

INSTRUCTIONS



MATERIALS



Glue



Scissors



Crayons



String

GUIDE

Lines

- Valley fold, fold in front
- - - - - Mountain fold, fold behind
- Cut
- X-ray or guide line.

1. Color the pages however you would like.
2. Cut along the outer solid line, and wherever else a cut line is noted.
3. Fold where indicated according to the guide.
4. Refer to the next sheet for recommended methods of construction. If string is unavailable, yarn or ribbon may also be used.
5. Carefully read and follow the notes on each sheet.

Please Note: When cutting with scissors and working with any of the materials listed above, adult participation and supervision is recommended.



Disney Paper Parks

#DisneyMagicMoments | #DisneyPaperParks

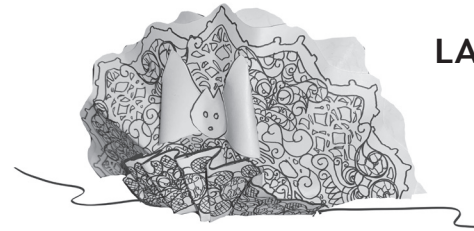
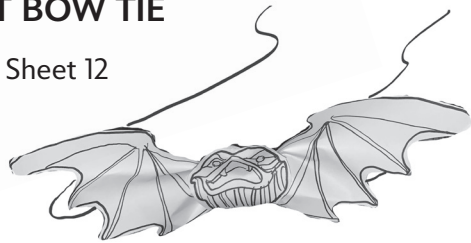
HAPPY HAUNTS WEARABLES

Sheet Numbers: 12, 13, 14, 15, 16, 17, 18, 19, 20



BAT BOW TIE

Sheet 12



LACE FASCINATOR

Sheet 15

LACE COLLAR

Sheet 16

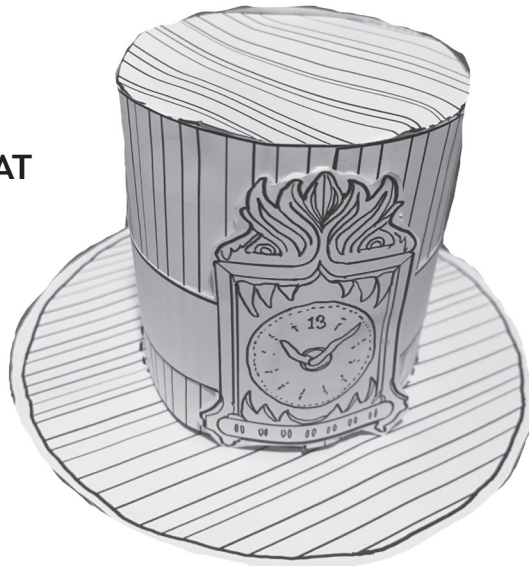


HITCHHIKING GHOST MASKS

Sheets 17 - 20

MINI TOP HAT

Sheets 13 - 14



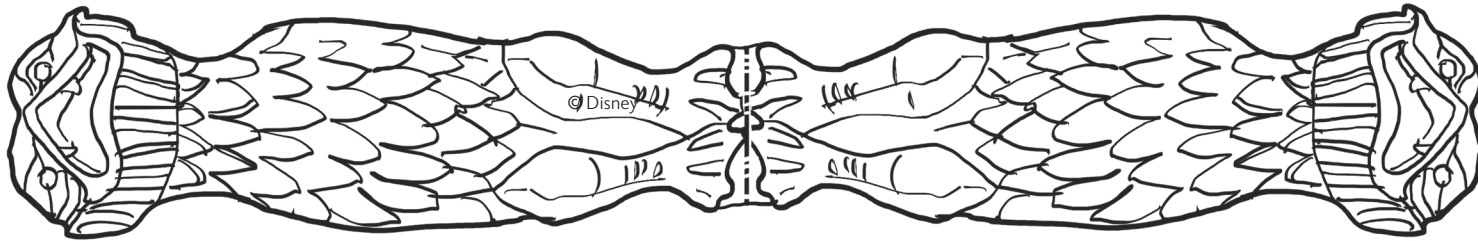


Disney Paper Parks

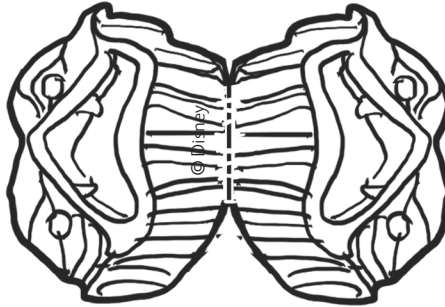
#DisneyMagicMoments | #DisneyPaperParks

THE HAUNTED MANSION

Sheet Number: 12



Center option 1

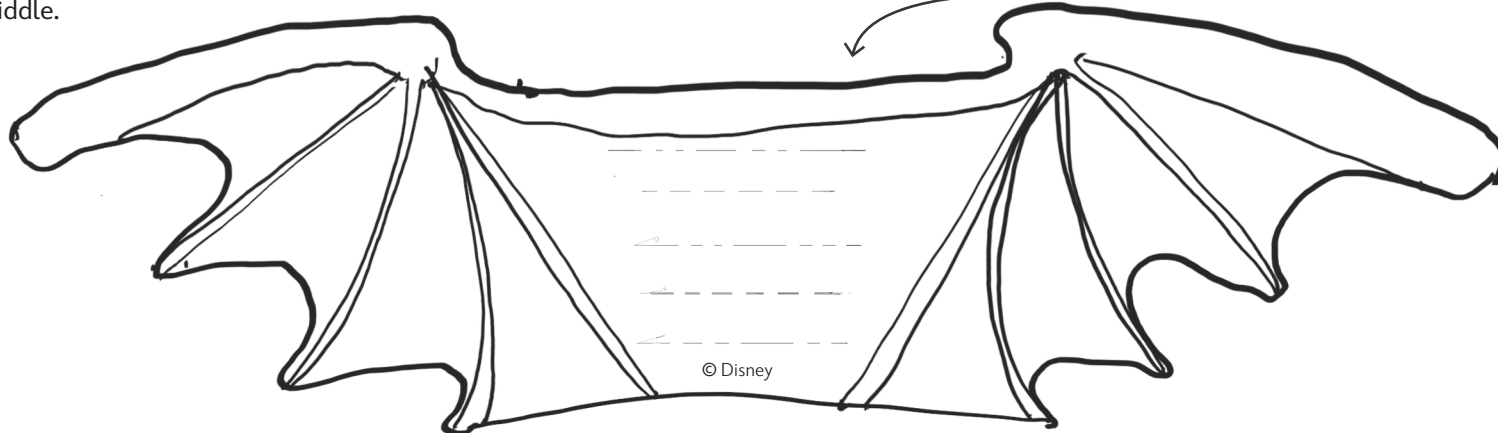


Center option 2

Pleat the center of the wings back and forth. It should pinch in the middle.

BAT BOW TIE

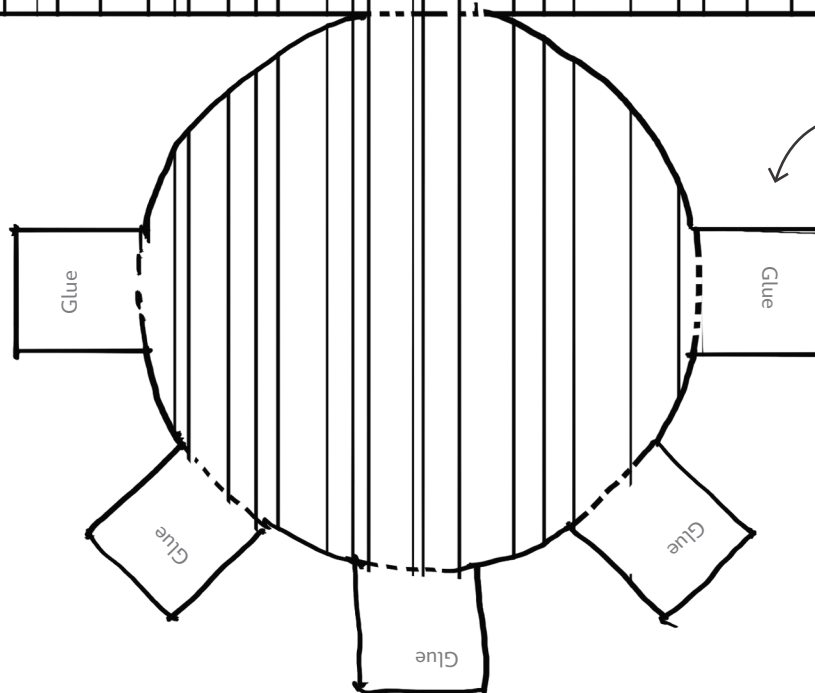
Fold and glue either center option 1 or 2 around the middle. Glue the top part only. Run a string (or ribbon) through the loop to tie around neck.





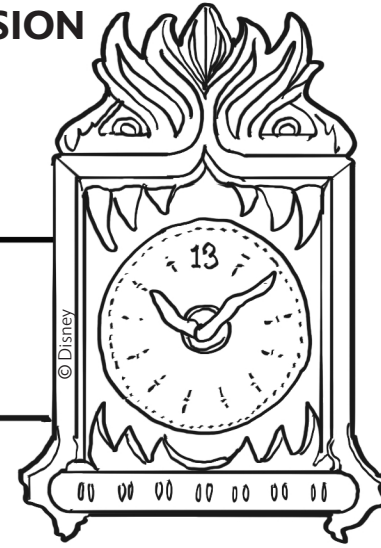
Glue

© Disney



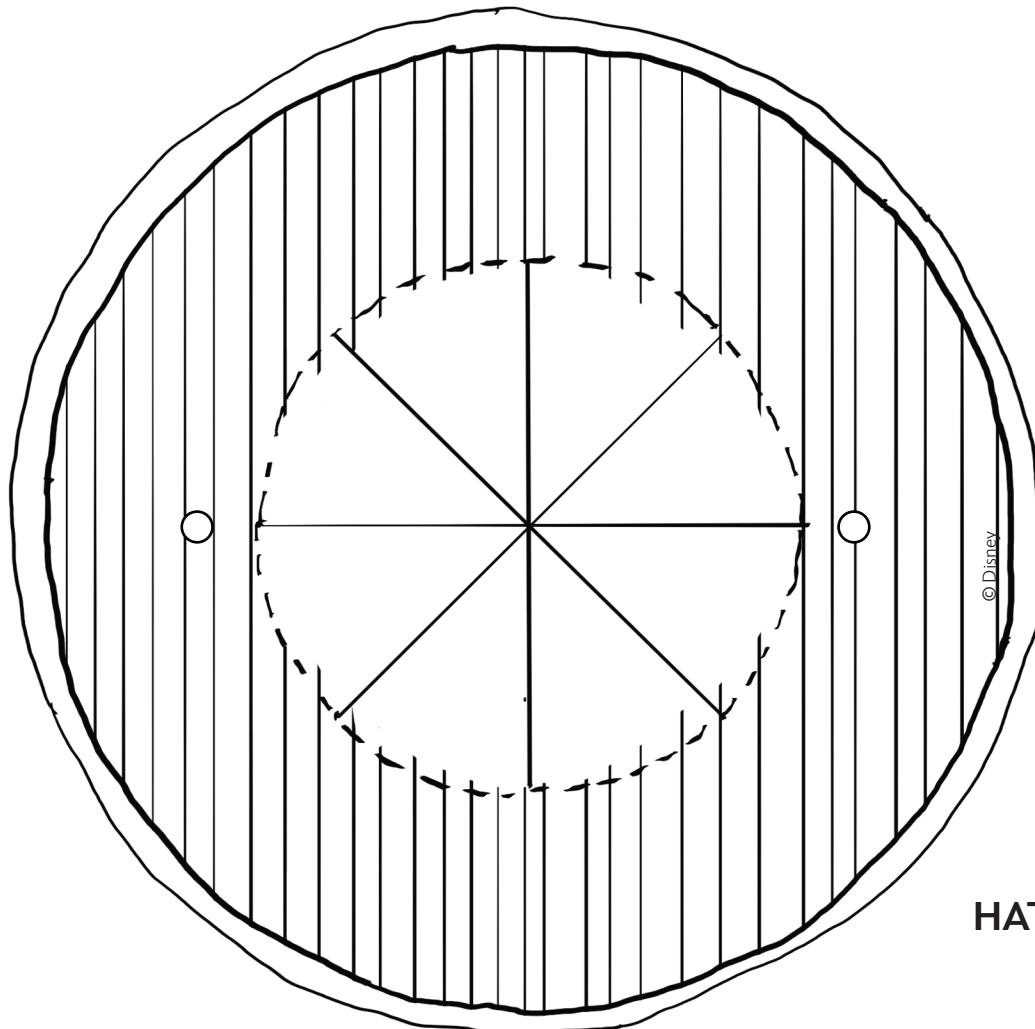
Roll the long side, and glue the tabs to the inside surface of the cylinder. Apply glue to the overlapping edges of the cylinder.

MINI TOP HAT



HATBAND

Glue the hatband right above the brim after the hat is assembled. The clock face will hide the seam.



Carefully cut the lines inside the circle and fold them up. Apply glue to attach the tabs to the inside bottom of the cylinder.

HAT BRIM

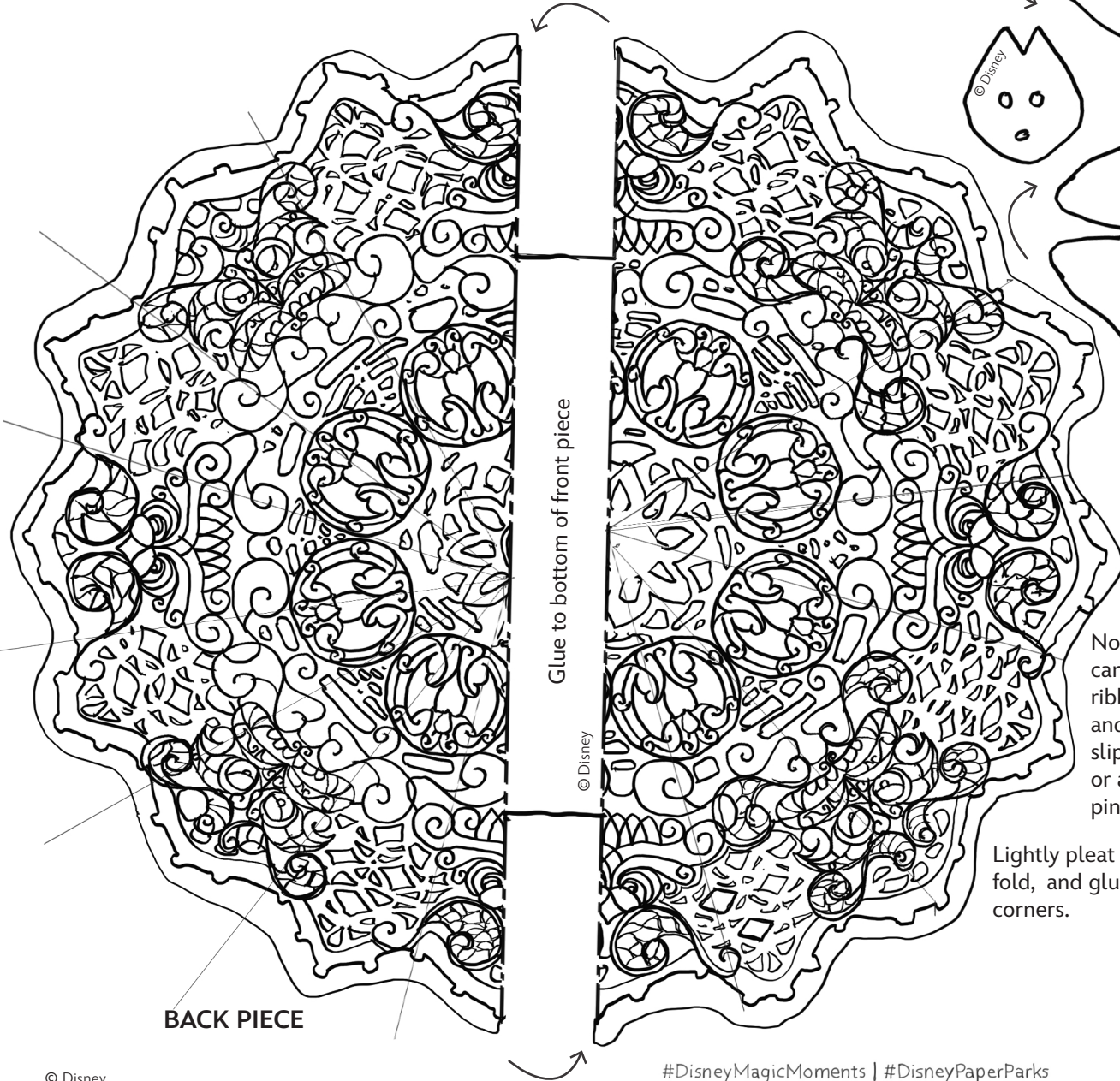
Punch holes through the small circles and attach ribbon or elastic string so it helps the mini hat stay on the head.



THE HAUNTED MANSION

Sheet Number: 15

LACE FASCINATOR



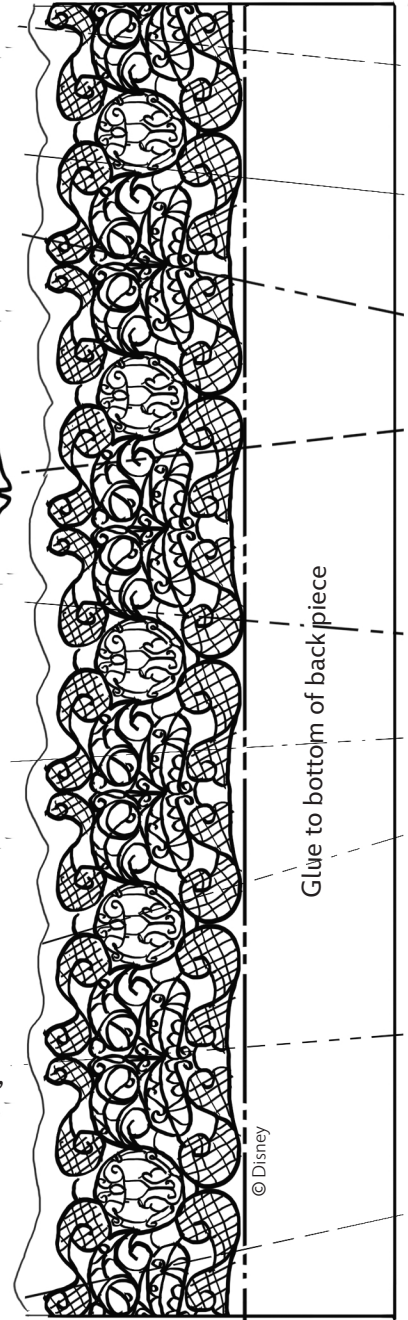
BACK PIECE

Lightly bend to glue the ends to the center. Glue the bat face over the seam.



Note: To wear, you can either run a ribbon through it and tie at the nape, slip onto a headband, or attach with bobby pins!

Lightly pleat the fan, fold, and glue only at the corners.



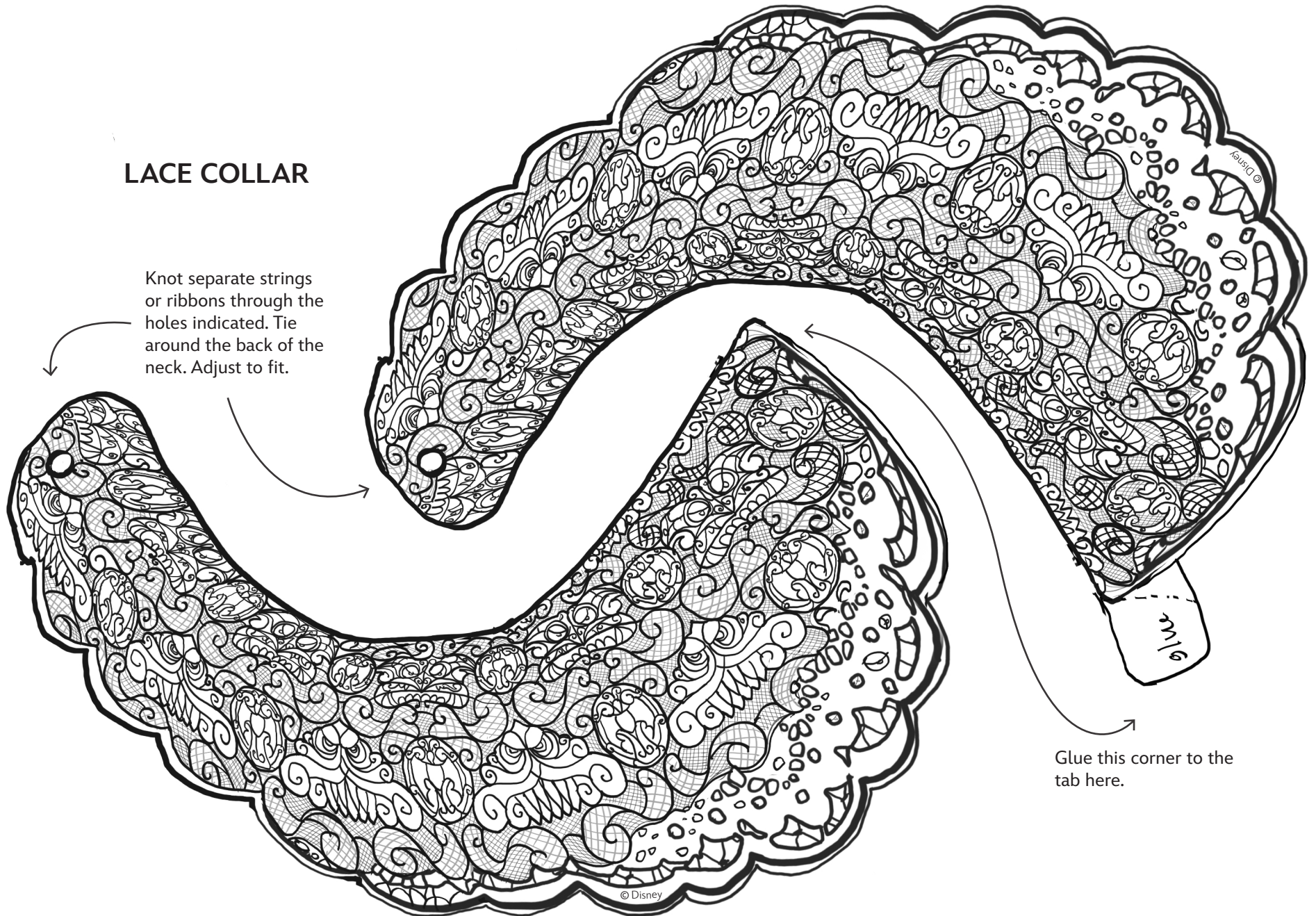
Glue to bottom of back piece

FRONT PIECE



LACE COLLAR

Knot separate strings or ribbons through the holes indicated. Tie around the back of the neck. Adjust to fit.



Glue this corner to the tab here.

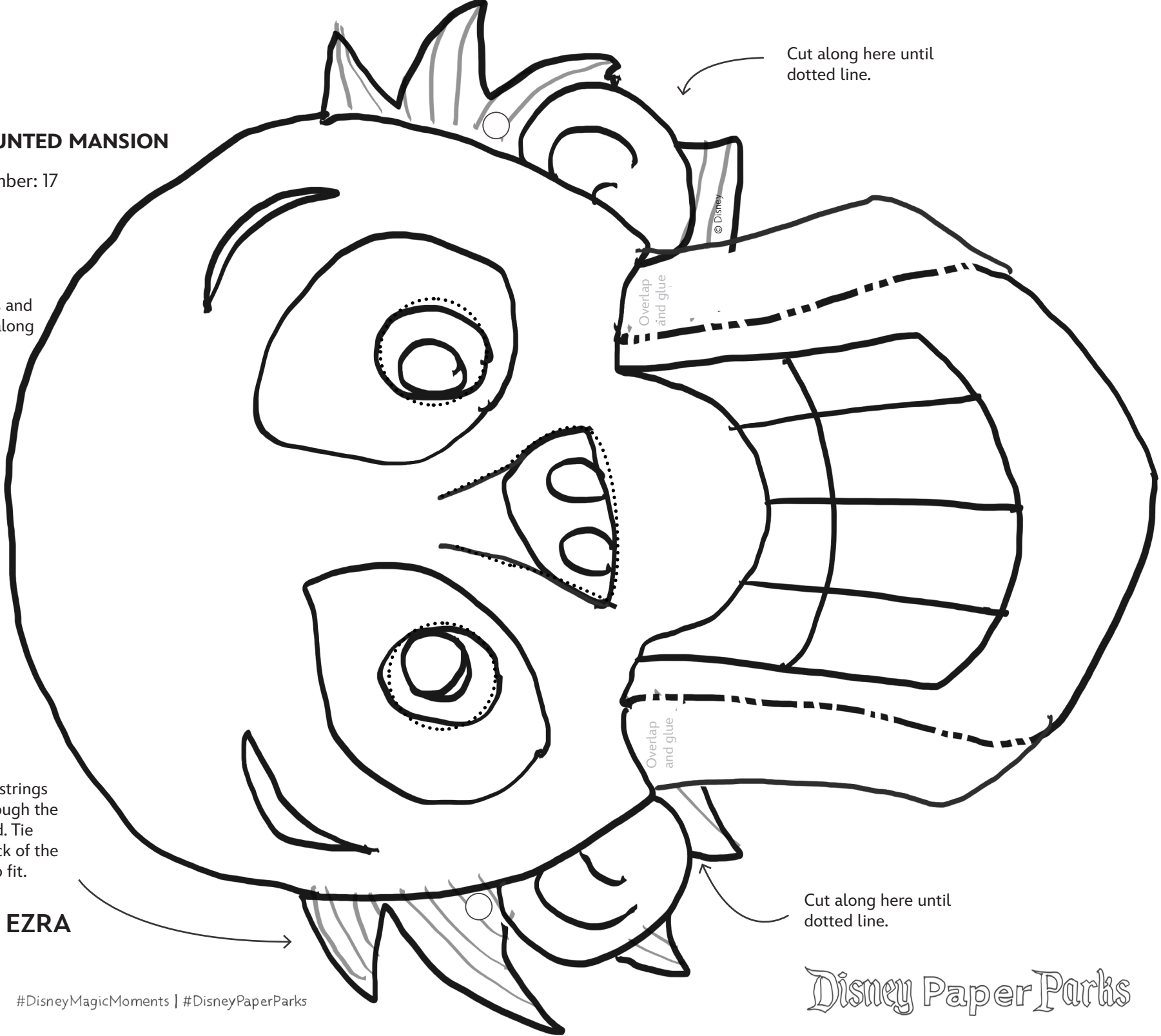


THE HAUNTED MANSION

Sheet Number: 17

Cut out eye holes and part of the nose along dotted lines.

Cut along here until dotted line.



Knot separate strings or ribbons through the holes indicated. Tie around the back of the head. Adjust to fit.

EZRA

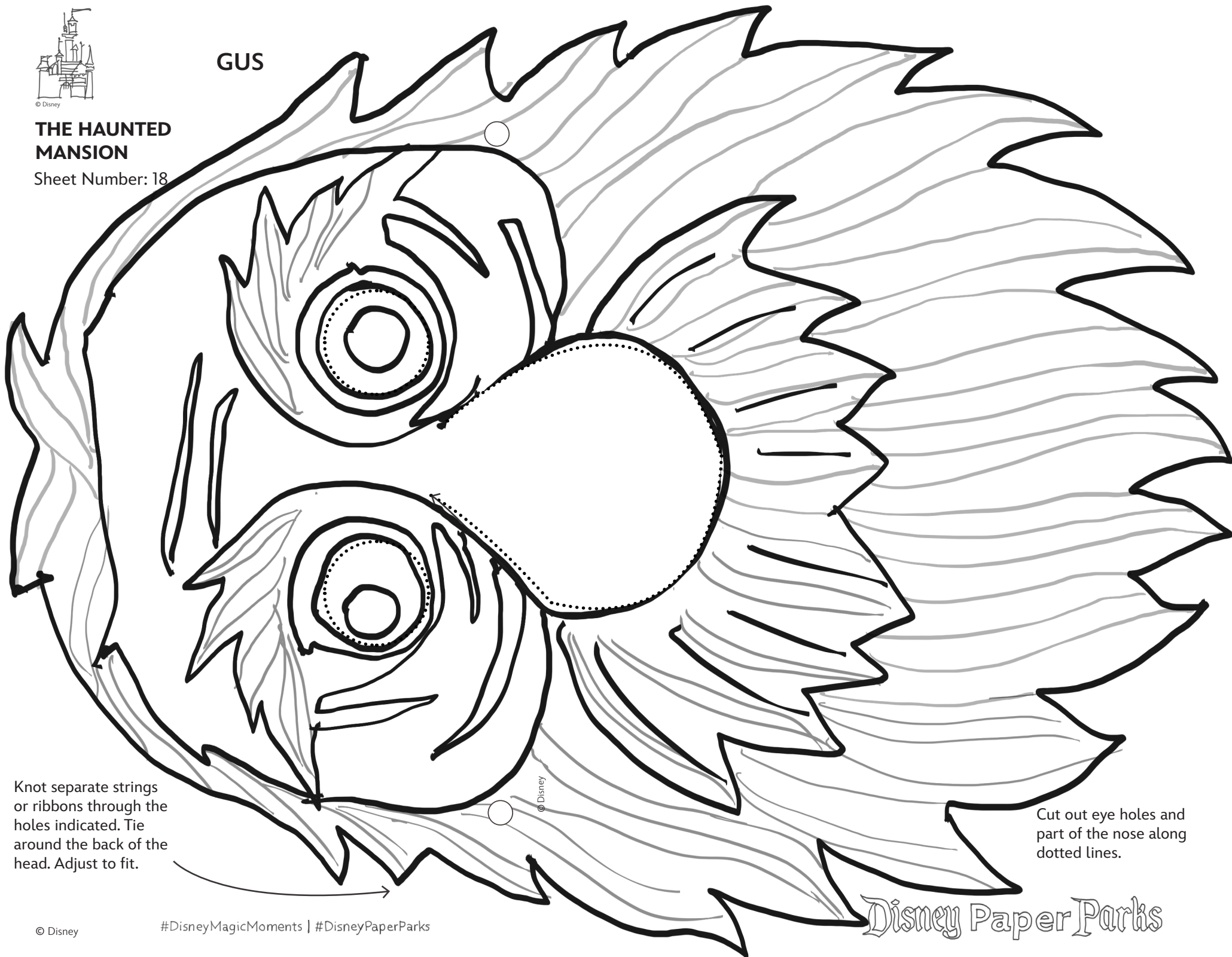
Cut along here until dotted line.



THE HAUNTED MANSION

Sheet Number: 18

GUS



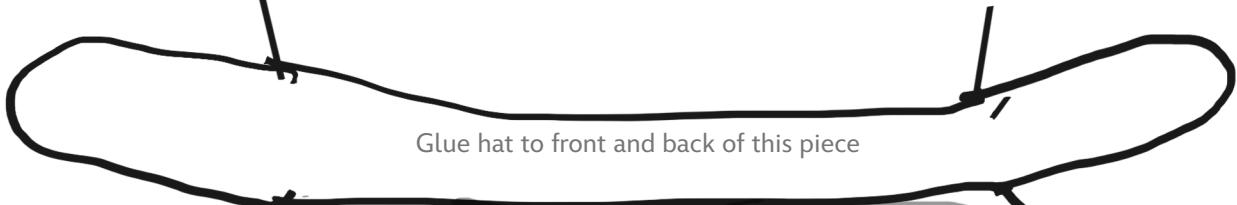
Knot separate strings or ribbons through the holes indicated. Tie around the back of the head. Adjust to fit.

Cut out eye holes and part of the nose along dotted lines.



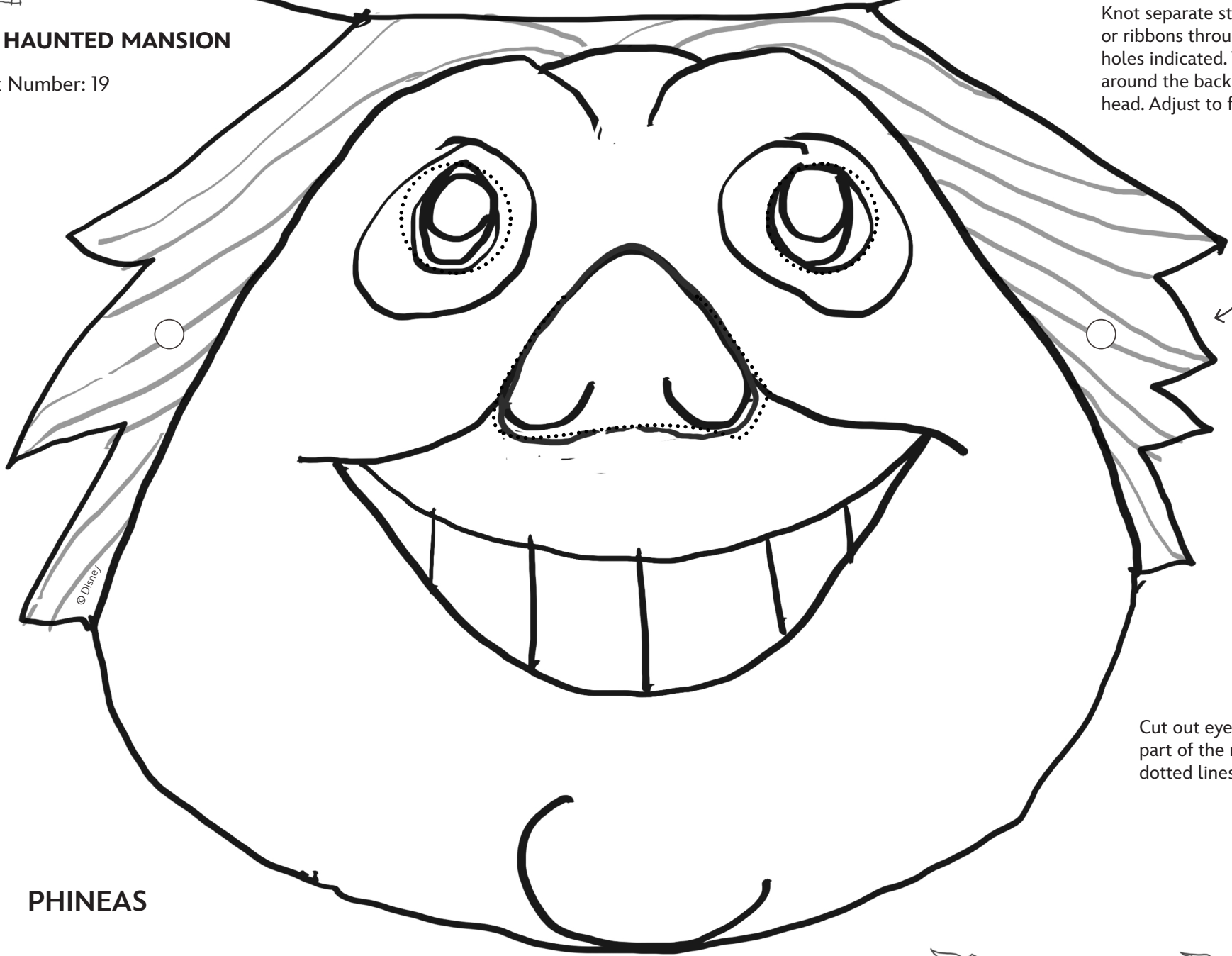
THE HAUNTED MANSION

Sheet Number: 19



Glue hat to front and back of this piece

Knot separate strings or ribbons through the holes indicated. Tie around the back of the head. Adjust to fit.

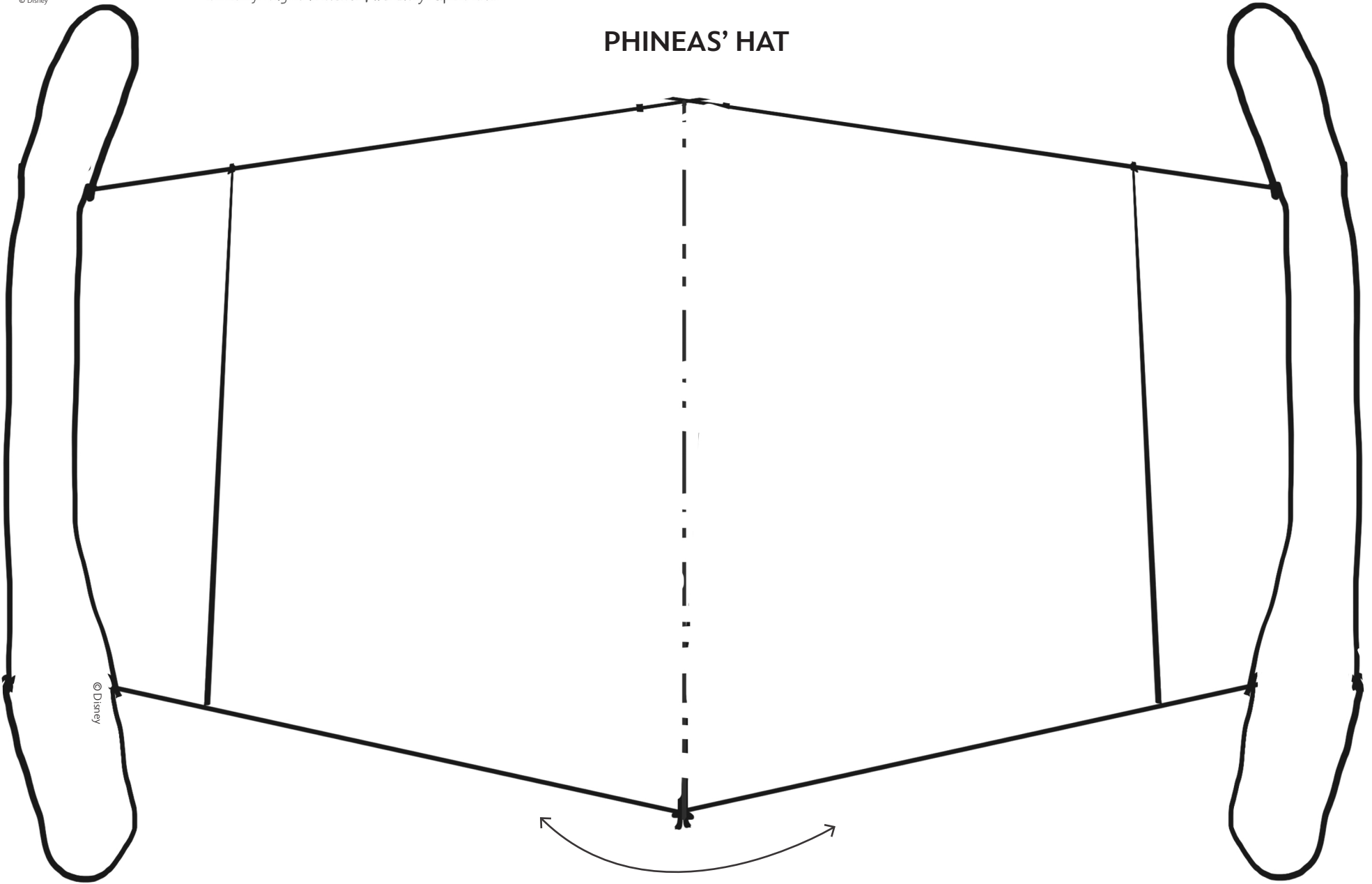


Cut out eye holes and part of the nose along dotted lines.

PHINEAS



PHINEAS' HAT



Fold and glue the bottom of the hat to the location indicated on Phineas' face.